

FOR RENT

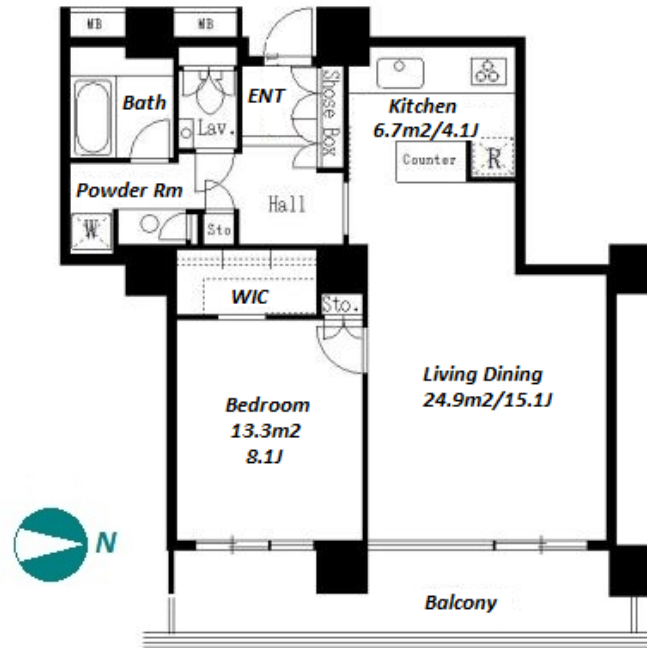
Property ID No. :85822

HOUSEREP TOKYO INC.

Website : www.houserep-tokyo.com

Property Name	RIVER POINT TOWER	Unit No.	TYPE	Access	Tsukishima Station on Yurakucho Line (7 min) Ecchuujima Station on JR Keiyo Line (14 min)
		1902	Apt.		
Address	1-11-6, Tsukuda, Chuo-Ku, Tokyo				

High Rise Tower Residence in Tokyo Bay Area



*The actual Layout & Size may differ slightly from this floor plans & pictures.

Lease Conditions			
LAYOUT	1 BR		
SIZE	65.22 m²/702.02 ft²		
RENT	JPY 306,000 / month		
Management Fee	-		
Deposit	2 months	Key Money	1 month
Lease Term	Standard lease for 24 months		
Available	Now		
Renewal Fee	1 month		
Agent Fee	1 month + tax		
Other Info	Key Replacement Fee : JPY15,000 Tax not included / Guarantor Company : TBC / Auto lock / Air-Con / Separated Toilet / Balcony / Internet Included / Penalty Fee for Early Cancellation / Musical Instrument Negotiable / CS/CATV / Flooring / IH Stoves / Bathroom dryer / WIC		

Building Information			
Completion	Apr, 1989	Earthquake Resistance	New
Structure	SRC, 40 story		
Car Parking	TBC		
Bicycle Parking	for 2 spaces (Included)		
Music Instrument	Negotiable	Pet	-
Facilities	Motorcycle Parking (extra charge) / Near Large Parks / Front desk / Janitor / Delivery box / Elevator / High-rise		

Remarks
Renters Insurance : Required



HOUSEREP TOKYO INC.

ハウスレップトーキョー株式会社

#301, 1-4-15, Hiroo, Shibuya-ku, Tokyo 150-0012, Japan

+81 (0)3 6427 5860

inquiry@houserep-tokyo.com

Transaction Type : Intermediate

Agent Fee : 1 month + tax

Website : www.houserep-tokyo.com

