

FOR RENT

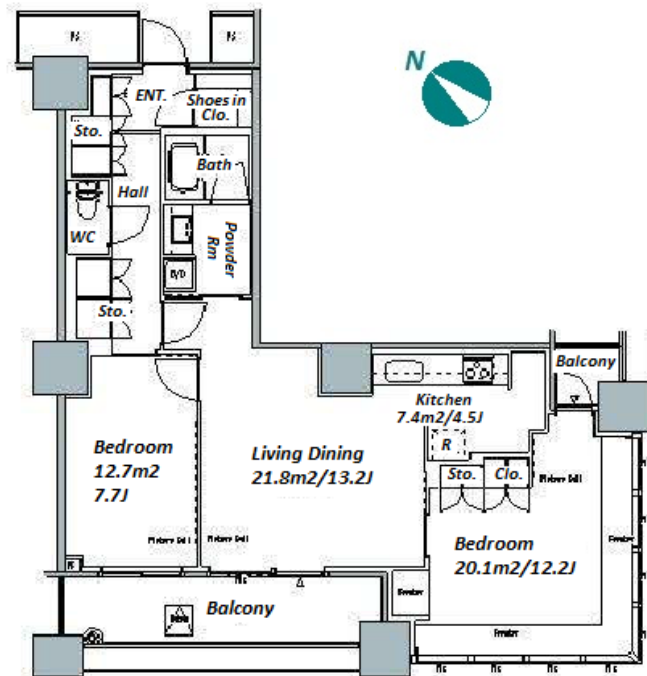
Property ID No. :84735

HOUSEREP TOKYO INC.

Website : www.houserep-tokyo.com

Property Name	THE TOKYO TOWERS MIDTOWER	Unit No.	TYPE	Access	Kachidoki Station on Oedo Line (6 min)
Address		402	Apt.		

Luxurious Tower Residence in Kachidoki, Tokyo Bay Area



Lease Conditions			
LAYOUT	2 BR		
SIZE	83.75 m²/901.47 ft²		
RENT	JPY 323,000 / month		
Management Fee	JPY20,000/month		
Deposit	2 months	Key Money	1 month
Lease Term	Standard lease for 24 months		
Available	Mid, Apr, 2024		
Renewal Fee	1 month		
Agent Fee	1 month + tax		
Other Info	Guarantor Company : TBC / Auto lock / Air-Con / Separated Toilet / Balcony / Internet Included / Musical Instrument Negotiable / Flooring / Bathroom dryer		

Building Information			
Completion	Jan, 2008	Earthquake Resistance	New
Structure	RC, 58 story		
Car Parking	JPY30,800 ~ 37,700 + tax / month		
Bicycle Parking	for 2 spaces (Included)		
Music Instrument	Negotiable	Pet	Allowed
Facilities	Motorcycle Parking (extra charge) / Gym (extra charge) / Within 20 min to Tokyo station by car / Near Large Parks / pool / Front desk / Concierge / Janitor / Delivery box / Elevator / High-rise		

Remarks
Renters Insurance : Required / Parking : 2 months for deposit / Gym : Resident exclusive guest room, pool, sauna, golf range & gym (extra charge) / Pet:additional charge

*The actual Layout & Size may differ slightly from this floor plans & pictures.



HOUSEREP TOKYO INC.

ハウスレップトーキョー株式会社

#301, 1-4-15, Hiroo, Shibuya-ku, Tokyo 150-0012, Japan

+81 (0)3 6427 5860 inquiry@houserep-tokyo.com

Transaction Type : Intermediate

Agent Fee : 1 month + tax

Website : www.houserep-tokyo.com

