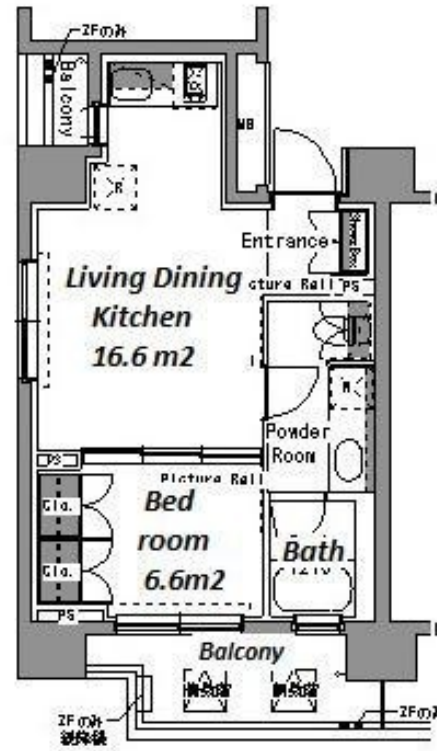


Property Name	PARK AXIS SHIBUYA SAKURAGAOKA	Unit No.	TYPE	Access	Shibuya Station on JR Yamanote Line (6 min) Shibuya Station on Ginza Line (8 min) Shibuya Station on Hanzomon Line (8 min)
		W701	Apt.		
Address	8, Sakuragaokacho, Shibuya-Ku, Tokyo				

Middle Rise Apt. in Shibuya / Daikanyama, Close to "Shibuya Station"



Lease Conditions			
LAYOUT	1 BR		
SIZE	34.64 m²/372.86 ft²		
RENT	JPY 204,000 / month		
Management Fee	JPY10,000/month		
Deposit	2 months	Key Money	1 month
Lease Term	Standard lease for 24 months		
Available	Mid, Jun, 2024		
Renewal Fee	1 month		
Agent Fee	1 month + tax		
Other Info	Key Replacement Fee : JPY20,000 Tax not included / Guarantor Company : TBC / Auto lock / Air-Con / Separated Toilet / Balcony / Musical Instrument Negotiable / CS/CATV / Washer / Dryer / Bathroom dryer		

Building Information			
Completion	Sep, 2006	Earthquake Resistance	New
Structure	RC, 14 story		
Car Parking	TBC		
Bicycle Parking	( Included )		
Music Instrument	Negotiable	Pet	Allowed
Facilities	Motorcycle Parking (TBC) / Within 20 min to Roppongi by train / Near Large Parks / Delivery box / Elevator		

\*The actual Layout & Size may differ slightly from this floor plans & pictures.



**HOUSEREP TOKYO INC.**  
ハウスレップトーキョー株式会社

#301, 1-4-15, Hiroo, Shibuya-ku, Tokyo 150-0012, Japan  
+81 (0)3 6427 5860 inquiry@housserep-tokyo.com

Transaction Type : Intermediate  
Agent Fee : 1 month + tax

Website : www.housserep-tokyo.com



Remarks
Renters Insurance : Required / Pet:additional deposit ( 1 month ) / Pet : a small dog or up to two cats