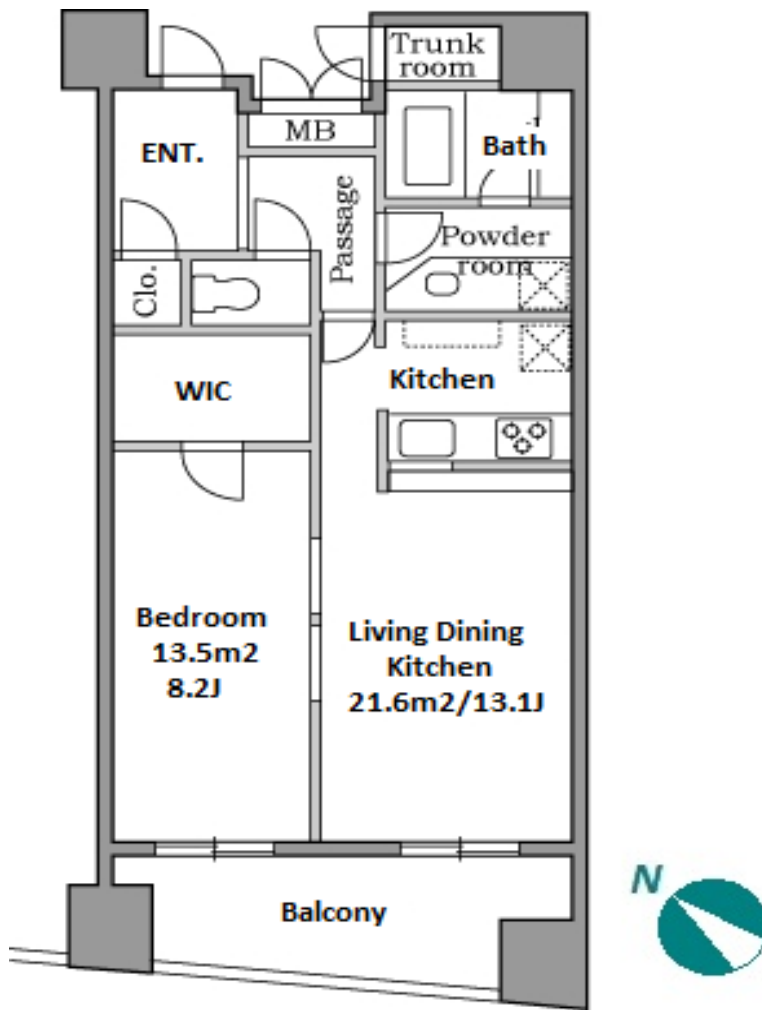


Property Name	RESIDIA EBISU II	Unit No.	TYPE	Access	Ebisu Station on Hibiya Line (2 min)
		1401	Apt.		Ebisu Station on JR Yamanote Line (5 min)
Address	1-21-7, Ebisunishi, Shibuya-Ku, Tokyo				Daikanyama Station on Toyoko Line (6 min)

Stylish Apartment in Ebisu / Daikanyama, Very Close to "Ebisu Station"



*The actual Layout & Size may differ slightly from this floor plans & pictures.

Lease Conditions		
LAYOUT	1 BR	
SIZE	53.61 m ² /577.05 ft ²	
RENT	JPY 300,000 / month	
Management Fee	JPY15,000/month	
Deposit	1 month	Key Money -
Lease Term	Standard lease for 24 months	
Available	Early, Apr, 2024	
Renewal Fee	1 month	
Agent Fee	1 month + tax	
Other Info	Key Replacement Fee : JPY18,000 Tax not included / Guarantor Company : TBC / No Key Money / Auto lock / Air-Con / Separated Toilet / Balcony / Internet (Extra Charge) / Penalty Fee for Early Cancellation / CS/CATV / Flooring / Bathroom dryer / WIC	

Building Information			
Completion	Jan, 2006	Earthquake Resistance	New
Structure	RC, 15 story		
Car Parking	JPY45,000 ~ 50,000 + tax / month		
Bicycle Parking	N/A		
Music Instrument	-	Pet	N/A
Facilities	Motorcycle Parking (TBC) / Trunk Room (JPY5,000 + tax / month) / Delivery box / Elevator		

Remarks
Tenant support fee: JPY.10,000+tax/2years Internet fee: JPY.1,500+tax/month / Parking : 1 month for deposit



HOUSEREP TOKYO INC.

ハウスレプトーキョー株式会社

#301, 1-4-15, Hiroo, Shibuya-ku, Tokyo 150-0012, Japan

+81 (0)3 6427 5860

inquiry@housserep-tokyo.com

Transaction Type : Intermediate

Agent Fee : 1 month + tax

Website : www.housserep-tokyo.com

