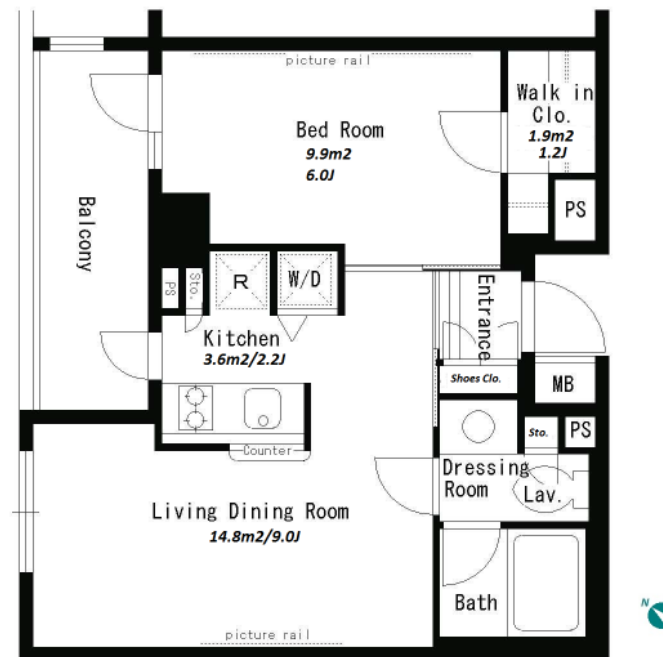


Property Name	PARK AXIS GAKUGEIDAIGAKU	Unit No.	TYPE	Access	Gakugeidaigaku Station on Toyoko Line (14 min) Komazawadaigaku Station on Denentoshi Line (15 min)
		213	Apt.		
Address	3-5-16, Nozawa, Setagaya-Ku, Tokyo				

Cozy Apt. in Gakugeidaigaku, Good Neighborhood near "Komazawa Park"



Lease Conditions			
LAYOUT	1 BR		
SIZE	38.62 m²/415.7 ft²		
RENT	JPY 150,000 / month		
Management Fee	JPY10,000/month		
Deposit	2 months	Key Money	1 month
Lease Term	Standard lease for 24 months		
Available	End, Feb, 2024		
Renewal Fee	1 month		
Agent Fee	1 month + tax		
Other Info	Key Replacement Fee : JPY15,000 Tax not included / Guarantor Company : TBC / Auto lock / Air-Con / Separated Toilet / Balcony / Penalty Fee for Early Cancellation / Musical Instrument Negotiable / CS/CATV / Flooring / Floor Heating / Bathroom dryer / WIC		

Building Information			
Completion	Nov, 2004	Earthquake Resistance	New
Structure	RC, 7 story		
Car Parking	JPY30,000 ~ 33,000 + tax / month		
Bicycle Parking	for 1 space (Included)		
Music Instrument	Negotiable	Pet	Allowed
Facilities	Motorcycle Parking (JPY3,000 + tax / month) / Delivery box / Elevator		

*The actual Layout & Size may differ slightly from this floor plans & pictures.



HOUSEREP TOKYO INC.

ハウスレップトーキョー株式会社

#301, 1-4-15, Hiroo, Shibuya-ku, Tokyo 150-0012, Japan

+81 (0)3 6427 5860

inquiry@housserrep-tokyo.com

Transaction Type : Intermediate

Agent Fee : 1 month + tax

Website : www.housserrep-tokyo.com



Remarks
Renters Insurance : Required / Bicycle parking : Registration fee: JPY.2,000+tax / Pet:additional deposit (1 month) / Pet : a small dog only/ No cat