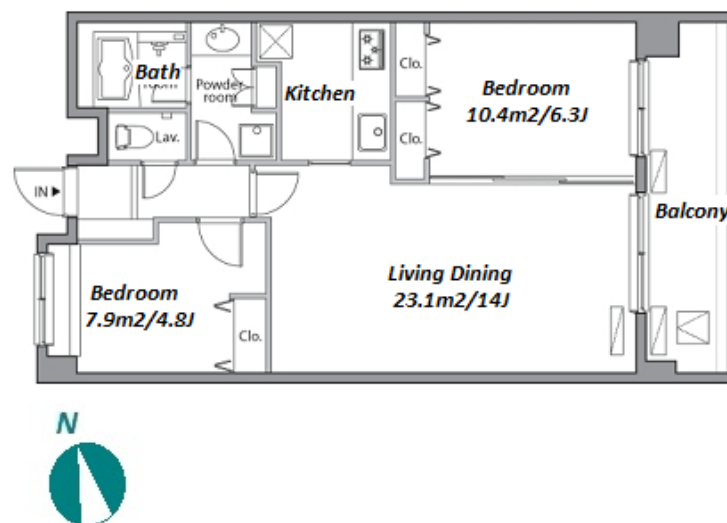
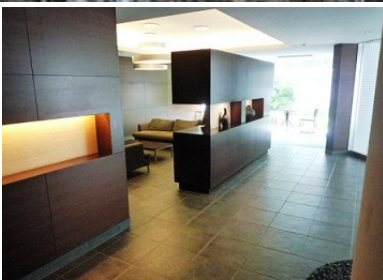


Property Name	RESIDIA YUTENJI	Unit No.	613	TYPE	Apt.	Access	Yuutennji Station on Toyoko Line (5 min)
Address	5-27-18, Nakameguro, Meguro-Ku, Tokyo						

Stylish Residence in Yutenji / Nakameguro



*The actual Layout & Size may differ slightly from this floor plans & pictures.

Lease Conditions			
LAYOUT	2 BR		
SIZE	60.37 m²/649.81 ft²		
RENT	/ month		
Management Fee	JPY15,000/month		
Deposit	2 months	Key Money	-
Lease Term	Standard lease for 24 months		
Available	Now		
Renewal Fee	1 month		
Agent Fee	1 month + tax		
Other Info	Key Replacement Fee : JPY18,000 Tax not included / Guarantor Company : TBC / No Key Money / Auto lock / Air-Con / Separated Toilet / Balcony / Internet (Extra Charge) / Penalty Fee for Early Cancellation / Flooring / Bathroom dryer		

Building Information			
Completion	Sep, 2006	Earthquake Resistance	New
Structure	RC, 7 story		
Car Parking	TBC		
Bicycle Parking	TBC		
Music Instrument	-	Pet	Allowed
Facilities	Motorcycle Parking (extra charge) / Within 20 min to Roppongi by train / Near Large Parks / Delivery box / Elevator / Security / Close to Station		

Remarks
Tenant support fee: JPY.10,000+tax/2years Internet fee: JPY.1,500+tax/month / Pet:additional deposit (1 month) / Pet : a small dog or a cat



HOUSEREP TOKYO INC.

ハウスレップトーキョー株式会社

#301, 1-4-15, Hiroo, Shibuya-ku, Tokyo 150-0012, Japan

+81 (0)3 6427 5860

inquiry@housserep-tokyo.com

Transaction Type : Intermediate

Agent Fee : 1 month + tax

Website : www.housserep-tokyo.com

