

FOR RENT

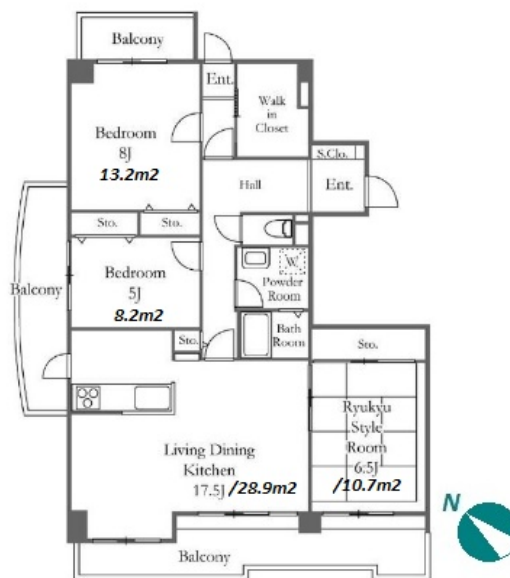
Property ID No. :153873

HOUSEREP TOKYO INC.

Website : www.housserep-tokyo.com

Property Name	RIVER CITY 21 EAST TOWERS 7	Unit No.	506	TYPE	Apt.	Access	Tsukishima Station on Yurakucho Line (6 min) Hacchoubori Station on Hibiya Line (12 min) Kayabachou Station on Hibiya Line (17 min)
Address	2-2-7, Tsukuda, Chuo-Ku, Tokyo						

## Renovated Mid-rise Apt. in Tsukishima, Bay Area



Lease Conditions			
LAYOUT	3 BR		
SIZE	98.76 m²/1063.04 ft²		
RENT	JPY 359,000 / month		
Management Fee	JPY10,000/month		
Deposit	1 month	Key Money	-
Lease Term	Standard lease for 24 months		
Available	26, Apr, 2024		
Renewal Fee	1 month		
Agent Fee	1 month + tax		
Other Info	Key Replacement Fee : JPY15,000 Tax not included / Auto lock / Separated Toilet / Balcony / Internet (Extra Charge) / Flooring / Bathroom dryer / WIC		

Building Information			
Completion	Apr, 1988	Earthquake Resistance	New
Structure	RC, 6 story		
Car Parking	JPY30,000 + tax / month		
Bicycle Parking	TBC		
Music Instrument	-	Pet	N/A
Facilities	Within 20 min to Tokyo station by car / Near Large Parks / Delivery box / Elevator		

Remarks
Renters Insurance : Required

\*The actual Layout & Size may differ slightly from this floor plans & pictures.



# HOUSEREP TOKYO INC.

ハウスレップトーキョー株式会社

#301, 1-4-15, Hiroo, Shibuya-ku, Tokyo 150-0012, Japan

+81 (0)3 6427 5860

inquiry@housserep-tokyo.com

Transaction Type : Intermediate

Agent Fee : 1 month + tax

Website : www.housserep-tokyo.com

