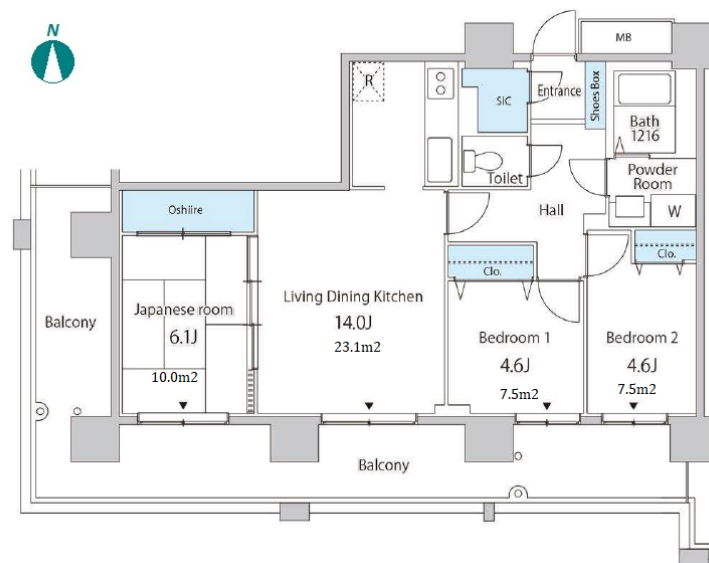


Property Name	CERULEAN HOMES KACHIDOKI	Unit No.	2506	TYPE	Apt.	Access	Kachidoki Station on Oedo Line (3 min)
Address	3-2-3, Kachidoki, Chuo-Ku, Tokyo						

Tower residence in Kachidoki, Tokyo bay area



Lease Conditions			
LAYOUT	3 BR		
SIZE	69.95 m ² /752.93 ft ²		
RENT	JPY 259,000 / month		
Management Fee	JPY20,000/month		
Deposit	2 months	Key Money	1.5 months
Lease Term	Standard lease for 24 months		
Available	End, May, 2024		
Renewal Fee	1 month		
Agent Fee	1 month + tax		
Other Info	Key Replacement Fee : JPY20,000 Tax not included / Guarantor Company : TBC / Auto lock / Air-Con / Separated Toilet / Balcony / Penalty Fee for Early Cancellation / Musical Instrument Negotiable / Flooring / Bathroom dryer		

Building Information			
Completion	Feb, 2001	Earthquake Resistance	New
Structure	RC, 26 story		
Car Parking	TBC		
Bicycle Parking	for 2 spaces (Included)		
Music Instrument	Negotiable	Pet	-
Facilities	Motorcycle Parking (TBC) / Near Large Parks / Front desk / Janitor / Delivery box / Elevator		

Remarks
Renters Insurance : Required

*The actual Layout & Size may differ slightly from this floor plans & pictures.



HOUSEREP TOKYO INC.

ハウスレップトーキョー株式会社

#301, 1-4-15, Hiroo, Shibuya-ku, Tokyo 150-0012, Japan

+81 (0)3 6427 5860

inquiry@housserep-tokyo.com

Transaction Type : Intermediate

Agent Fee : 1 month + tax

Website : www.housserep-tokyo.com

