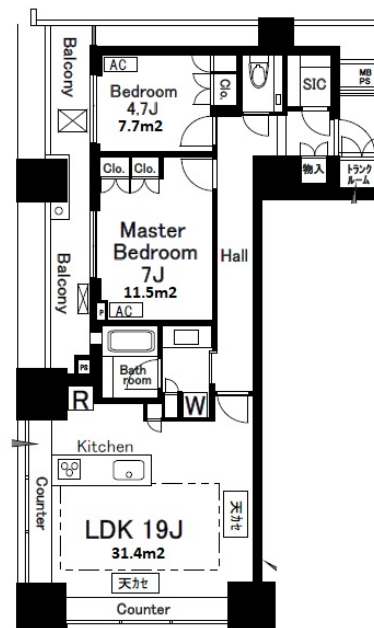
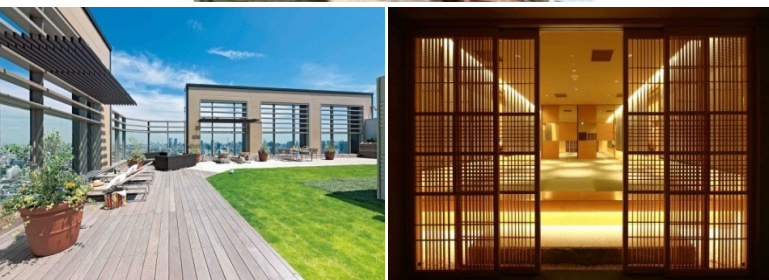


Property Name	PARK TOWER GRAN SKY	Unit No.	TYPE	Access	Oosaki Station on JR Yamanote Line (6 min) Gotanda Station on Toei Asakusa Line (6 min) Gotanda Station on JR Yamanote Line (6 min)
		19F	Apt.		
Address	2-10-1, Higashigotanda, Shinagawa-Ku, Tokyo				

Luxury High Rise Apartment w/ Amenities in Gotanda / Osaki



Lease Conditions			
LAYOUT	2 BR		
SIZE	77.08 m²/829.68 ft²		
RENT	JPY 390,000 / month		
Management Fee	JPY15,000/month		
Deposit	2 months	Key Money	1 month
Lease Term	Fixed term lease for 36 months		
Available	Now		
Renewal Fee	-		
Agent Fee	1 month + tax		
Other Info	Auto lock / Air-Con / Separated Toilet / Balcony / Nice Views / Garden/Terrace / Roof Balcony / Flooring / Dishwasher / Bathroom dryer / Corner Unit		

Building Information			
Completion	Jun, 2010	Earthquake Resistance	New
Structure	RC, 44 story		
Car Parking	TBC		
Bicycle Parking	N/A		
Music Instrument	-	Pet	-
Facilities	Motorcycle Parking (TBC) / Trunk Room ((Included)) / Front desk / Delivery box		

Remarks
Renters Insurance : Required / Document handling charge: 10,000yen+tax

*The actual Layout & Size may differ slightly from this floor plans & pictures.



HOUSEREP TOKYO INC.

ハウスレップトーキョー株式会社

#301, 1-4-15, Hiroo, Shibuya-ku, Tokyo 150-0012, Japan

+81 (0)3 6427 5860

inquiry@housserrep-tokyo.com

Transaction Type : Intermediate

Agent Fee : 1 month + tax

Website : www.housserrep-tokyo.com

