

FOR RENT

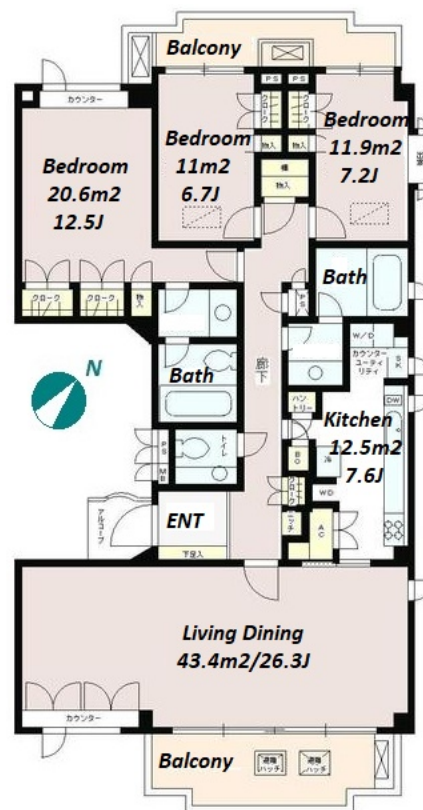
Property ID No. :153643

HOUSEREP TOKYO INC.

Website : www.housserep-tokyo.com

Property Name	TOKUGAWAYAMA PARK MANSION	Unit No.	TYPE	Access	Yoyogiuehara Station on Chiyoda Line (5 min) Yoyogiuehara Station on Odakyu Line (5 min)
		302	Apt.		
Address	3-42-7, Nishihara, Shibuya-Ku, Tokyo				

Low Rise Apartment near Yoyogi Uehara Station



Lease Conditions			
LAYOUT	3 BR		
SIZE	148.3 m²/1596.28 ft²		
RENT	JPY 650,000 / month		
Management Fee	-		
Deposit	2 months	Key Money	1 month
Lease Term	Standard lease for 24 months		
Available	Early, Aug, 2024		
Renewal Fee	1 month		
Agent Fee	1 month + tax		
Other Info	Key Replacement Fee : JPY20,000 Tax not included / Auto lock / Fridge / Air-Con / Separated Toilet / Balcony / Floor Heating / Washer / Dryer / Dishwasher / Oven / Bathroom dryer		

Building Information			
Completion	Apr, 1988	Earthquake Resistance	New
Structure	RC, 3 story		
Car Parking	-		
Bicycle Parking	extra charge		
Music Instrument	-	Pet	
Facilities	Motorcycle Parking (TBC) / Trunk Room (TBC) / Within 20 min to Tokyo station by car / Near Large Parks / Elevator / Close to Station / Low-rise		

Remarks
Renters Insurance : Required / Pet:additional deposit (1 month)

*The actual Layout & Size may differ slightly from this floor plans & pictures.



HOUSEREP TOKYO INC.

ハウスレップトーキョー株式会社

#301, 1-4-15, Hiroo, Shibuya-ku, Tokyo 150-0012, Japan

+81 (0)3 6427 5860

inquiry@housserep-tokyo.com

Transaction Type : Intermediate

Agent Fee : 1 month + tax

Website : www.housserep-tokyo.com

