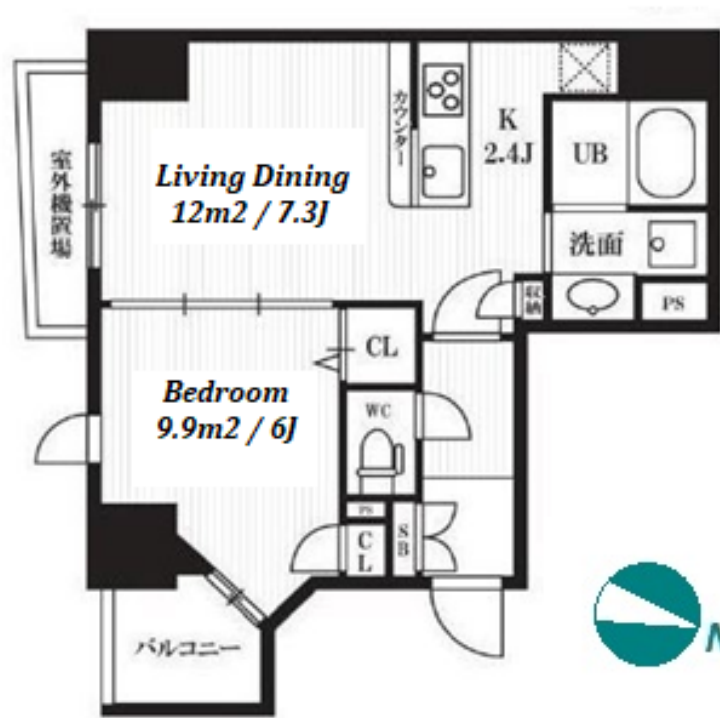
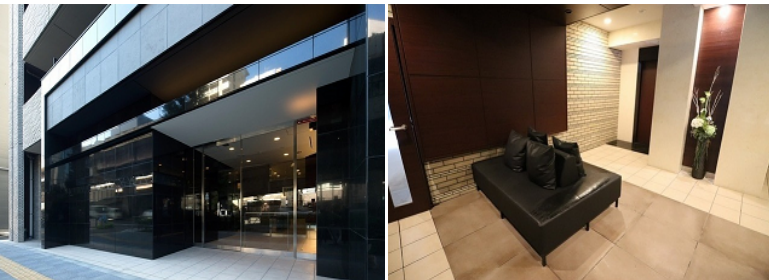


Property Name	PEAKS KANDA	Unit No.	TYPE	Access	Shinnnihonnbashi Station on JR Sobu Line (4 min) Kannda Station on JR Yamanote Line (5 min) Mitsukoshimae Station on Ginza Line (8 min)
		1101	Apt.		
Address	4-7, Kandanishifukudacho, Chiyoda-Ku, Tokyo				

Mid-rise in Kanda, near Nihombashi



Lease Conditions			
LAYOUT	1 BR		
SIZE	40.13 m²/431.95 ft²		
RENT	JPY 192,000 / month		
Management Fee	JPY10,000/month		
Deposit	2 months	Key Money	-
Lease Term	Standard lease for 24 months		
Available	End, Jun, 2024		
Renewal Fee	1 month		
Agent Fee	1 month + tax		
Other Info	Key Replacement Fee : JPY20,000 Tax not included / Guarantor Company : TBC / No Key Money / Auto lock / Air-Con / Separated Toilet / Balcony / Internet Included / Penalty Fee for Early Cancellation / Flooring / Bathroom dryer		
Building Information			
Completion	Jul, 2017	Earthquake Resistance	New
Structure	RC, 14 story		
Car Parking	extra charge		
Bicycle Parking	JPY250 ~ 350 + tax / month		
Music Instrument	-	Pet	Allowed
Facilities	Within 20 min to Tokyo station by car / Janitor / Delivery box / Elevator		

\*The actual Layout & Size may differ slightly from this floor plans & pictures.



HOUSEREP TOKYO INC.

ハウズレップトーキョー 株式会社

#301, 1-4-15, Hiroo, Shibuya-ku, Tokyo 150-0012, Japan

+81 (0)3 6427 5860

inquiry@housserep-tokyo.com

Transaction Type : Intermediate

Agent Fee : 1 month + tax

Website : www.housserep-tokyo.com



Remarks
Pet:additional deposit ( 1 month ) / Pet : a small dog or a cat