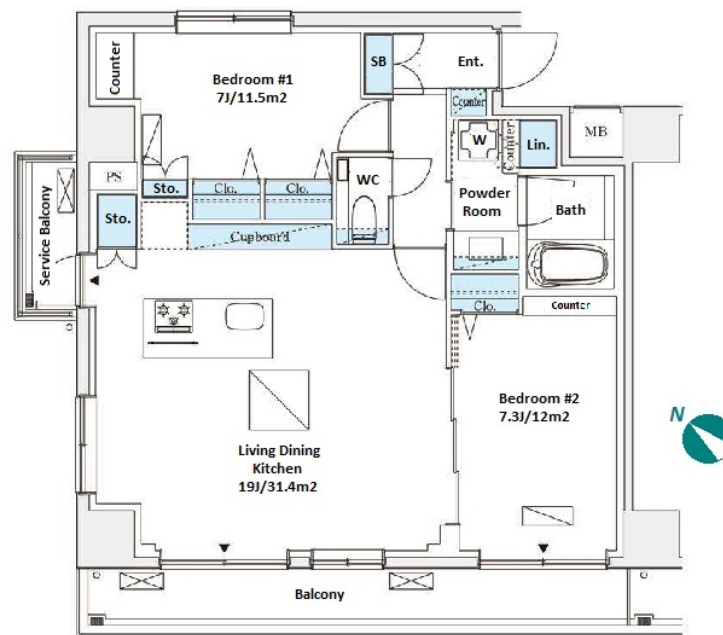


Property Name	OPUS RESIDENCE MINAMIAOYAMA	Unit No.	204	TYPE	Apt.	Access	Gaienmae Station on Ginza Line (7 min)
Address	4-1-10, Minamiaoyama, Minato-Ku, Tokyo						

Mid rise apartment in TOKYO near Gaienmae Sta.



*The actual Layout & Size may differ slightly from this floor plans & pictures.

Lease Conditions	
LAYOUT	2 BR
SIZE	71.41 m²/768.65 ft²
RENT	JPY 550,000 / month
Management Fee	JPY20,000/month
Deposit	2 months
Key Money	-
Lease Term	Standard lease for 24 months
Available	Now
Renewal Fee	1 month
Agent Fee	1 month + tax
Other Info	Guarantor Company : TBC / No Key Money / Auto lock / Air-Con / Separated Toilet / Balcony / Internet (Extra Charge) / Penalty Fee for Early Cancellation / CS/CATV / Floor Heating / Dishwasher / Bathroom dryer

Building Information			
Completion	Mar, 2024	Earthquake Resistance	New
Structure	RC, 11 story		
Car Parking	N/A		
Bicycle Parking	-		
Music Instrument	-	Pet	
Facilities	Janitor / Delivery box / Elevator / Security / Newly-built (~1 y/o)		

Remarks
Renters Insurance : Required / Pet:additional deposit (1 month)



HOUSEREP TOKYO INC.

ハウズレップトーキョー株式会社

#301, 1-4-15, Hiroo, Shibuya-ku, Tokyo 150-0012, Japan

+81 (0)3 6427 5860

inquiry@housserep-tokyo.com

Transaction Type : Intermediate

Agent Fee : 1 month + tax

Website : www.housserep-tokyo.com

