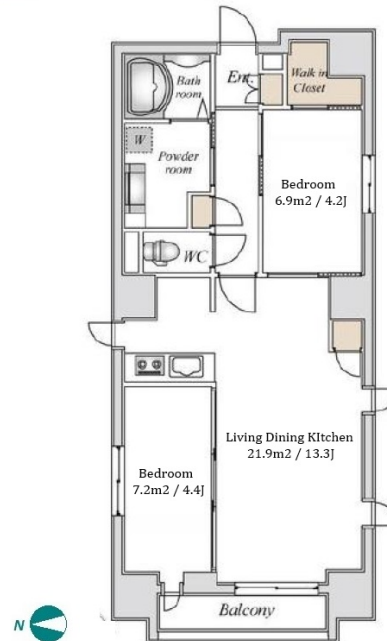


Property Name	LIVE FLAT KINSHICHO	Unit No.	TYPE	Access	Kinsshichou Station on JR Sobu Line (9 min) Kinsshichou Station on JR Chuo-Sobu Line (9 min) Kinsshichou Station on Hanzomon Line (10 min)
		601	Apt.		
Address	1-15-4, Taihei, Sumida-Ku, Tokyo				



Lease Conditions			
LAYOUT	2 BR		
SIZE	50.28 m²/541.2 ft²		
RENT	JPY 224,000 / month		
Management Fee	JPY15,000/month		
Deposit	-	Key Money	-
Lease Term	Standard lease for 24 months		
Available	Ask for Details		
Renewal Fee	1 month		
Agent Fee	1 month + tax		
Other Info	No Key Money / Free rent / Auto lock / Air-Con / Separated Toilet / Balcony / Internet Included / Penalty Fee for Early Cancellation / Flooring / Bathroom dryer / WIC / Corner Unit		

Building Information			
Completion	Mar, 2023	Earthquake Resistance	New
Structure	RC, 9 story		
Car Parking	-		
Bicycle Parking	-		
Music Instrument	-	Pet	
Facilities	Near Large Parks / Janitor / Delivery box / Elevator / Security / 24h Garbage Drop-off / Newly-built (~7 y/o)		

Remarks
Renters Insurance : Required / Pet:additional deposit (1 month)

*The actual Layout & Size may differ slightly from this floor plans & pictures.



HOUSEREP TOKYO INC.

ハウスレップトーキョー株式会社

#301, 1-4-15, Hiroo, Shibuya-ku, Tokyo 150-0012, Japan

+81 (0)3 6427 5860

inquiry@housserep-tokyo.com

Transaction Type : Intermediate

Agent Fee : 1 month + tax

Website : www.housserep-tokyo.com

