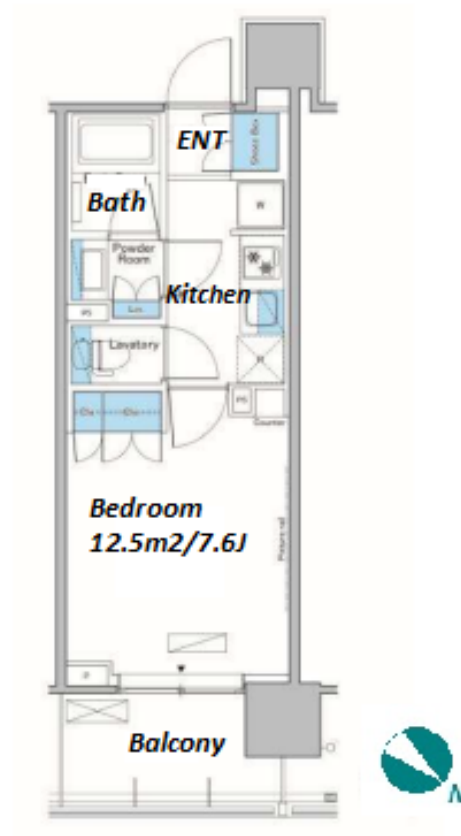
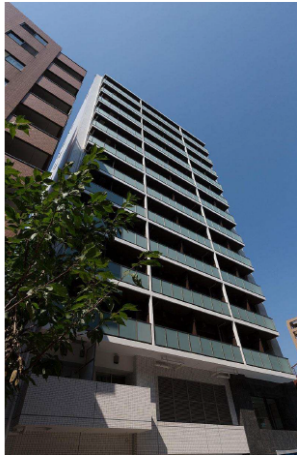


Property Name	LEFOND PROGRES TAKINOGAWA	Unit No.	505	TYPE	Apt.	Access	Nishisugamo Station on Mita Line (5 min) Itabashi Station on JR Saikyo Line (8 min)
Address	6-44-12, Takinogawa, Kita-Ku, Tokyo						

Stylish Mid-rise Apt. in Takinogawa, near Itabashi



*The actual Layout & Size may differ slightly from this floor plans & pictures.

Lease Conditions			
LAYOUT	Studio		
SIZE	25.6 m²/275.55 ft²		
RENT	JPY 108,000 / month		
Management Fee	JPY10,000/month		
Deposit	2 months	Key Money	-
Lease Term	Standard lease for 24 months		
Available	End, May, 2024		
Renewal Fee	1 month		
Agent Fee	1 month + tax		
Other Info	Key Replacement Fee : JPY20,000 Tax not included / Guarantor Company : TBC / No Key Money / Auto lock / Air-Con / Separated Toilet / Balcony / Internet Included / Penalty Fee for Early Cancellation / Musical Instrument Negotiable / CS/CATV / Flooring / Bathroom dryer		

Building Information			
Completion	Sep, 2015	Earthquake Resistance	New
Structure	RC, 13 story		
Car Parking	JPY30,000 + tax / month		
Bicycle Parking	for 1 space (Included)		
Music Instrument	Negotiable	Pet	Allowed
Facilities	Motorcycle Parking (JPY3,000 + tax / month) / Delivery box / Elevator		

Remarks
Renters Insurance : Required / Pet:additional deposit (1 month) / Pet : a small dog or a cat



HOUSEREP TOKYO INC.

ハウスレップトーキョー株式会社

#301, 1-4-15, Hiroo, Shibuya-ku, Tokyo 150-0012, Japan

+81 (0)3 6427 5860 inquiry@houserep-tokyo.com

Transaction Type : Intermediate

Agent Fee : 1 month + tax

Website : www.houserep-tokyo.com

