

FOR RENT

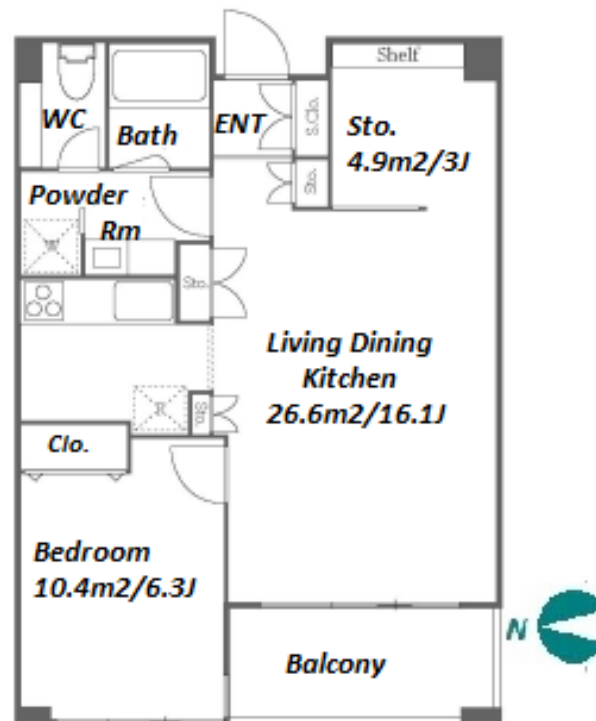
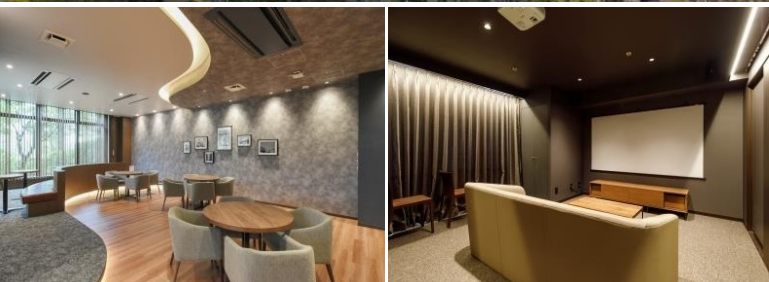
Property ID No. :153543

HOUSEREP TOKYO INC.

Website : www.housserep-tokyo.com

Property Name	RIVER CITY 21 EAST TOWERS II	Unit No.	TYPE	Access	Tsukishima Station on Yurakucho Line (8 min) Hacchoubori Station on JR Keiyo Line (12 min)
		4113	Apt.		
Address	2-1-2, Tsukuda, Chuo-Ku, Tokyo				

## Tower Residence near Sumida River / Tokyo Bay



\*The actual Layout &amp; Size may differ slightly from this floor plans &amp; pictures.

Lease Conditions			
LAYOUT	1 BR+S		
SIZE	55.57 m²/598.15 ft²		
RENT	JPY 257,000 / month		
Management Fee	JPY10,000/month		
Deposit	2 months	Key Money	-
Lease Term	Standard lease for 24 months		
Available	End, Apr, 2024		
Renewal Fee	1 month		
Agent Fee	1 month + tax		
Other Info	Key Replacement Fee : JPY15,000 Tax not included / Guarantor Company : TBC / No Key Money / Auto lock / Air-Con / Separated Toilet / Balcony / Penalty Fee for Early Cancellation / Nice Views / Flooring / Floor Heating / IH Stoves / Bathroom dryer / 2 Car Parks		

Building Information			
Completion	Aug, 2000	Earthquake Resistance	New
Structure	RC, 43 story		
Car Parking	JPY28,800 + tax / month		
Bicycle Parking	for 1 space ( Included )		
Music Instrument	-	Pet	N/A
Facilities	Motorcycle Parking (TBC) / Trunk Room (JPY3,000 + tax / month) / Delivery box / Elevator / Sky lounge / Security		

Remarks
Renters Insurance : Required / Parking : 3 months deposit



HOUSEREP TOKYO INC.

ハウスレップトーキョー株式会社

#301, 1-4-15, Hiroo, Shibuya-ku, Tokyo 150-0012, Japan

+81 (0)3 6427 5860

inquiry@housserep-tokyo.com

Transaction Type : Intermediate

Agent Fee : 1 month + tax

Website : www.housserep-tokyo.com

