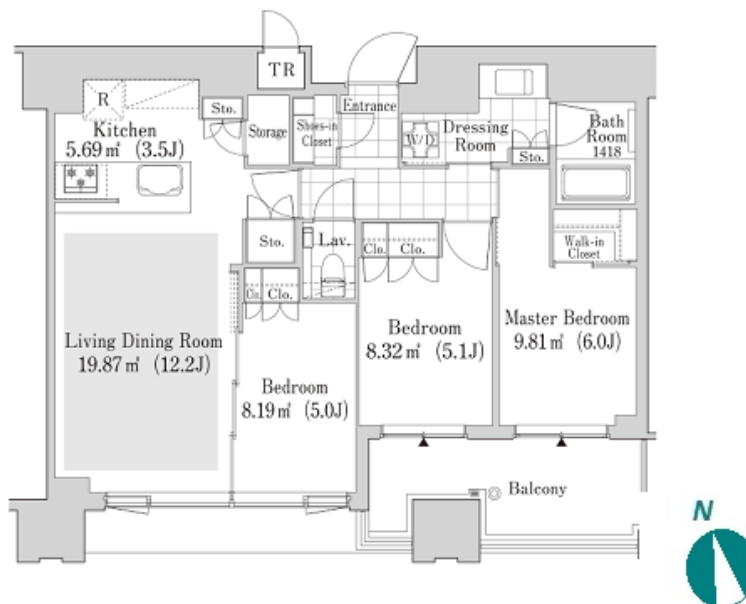


Property Name	OSAKI GARDEN RESIDENCE	Unit No.	TYPE	Access	Oosaki Station on JR Yamanote Line (8 min) Ooimachi Station on JR Keihin Tohoku Line (15 min) Gotanda Station on JR Yamanote Line (18 min)
		1509	Apt.		
Address	1-2-1, Nishishinagawa, Shinagawa-Ku, Tokyo				

Modern High-rise Apt. in Osaki, easy access to Ebisu / Shibuya / Yokohama.



Lease Conditions			
LAYOUT	3 BR		
SIZE	73.33 m²/789.31 ft²		
RENT	JPY 443,000 / month		
Management Fee	-		
Deposit	2 months	Key Money	-
Lease Term	Fixed term lease for 36 months		
Available	End, Jun, 2024		
Renewal Fee	-		
Agent Fee	1 month + tax		
Other Info	Depreciation : 1 month / No Key Money / Auto lock / Air-Con / Separated Toilet / Balcony / Internet (Extra Charge) / Penalty Fee for Early Cancellation / Flooring / Floor Heating / Bathroom dryer / WIC		

Building Information			
Completion	Aug, 2018	Earthquake Resistance	New
Structure	RC, 23 story		
Car Parking	TBC		
Bicycle Parking	TBC		
Music Instrument	-	Pet	Allowed
Facilities	Within 20 min to Tokyo station by car / Near Large Parks / Front desk / Concierge / Janitor / Delivery box / Elevator / High-rise / Newly-built (~7 y/o)		

\*The actual Layout & Size may differ slightly from this floor plans & pictures.



HOUSEREP TOKYO INC.

ハウスレップトーキョー株式会社

#301, 1-4-15, Hiroo, Shibuya-ku, Tokyo 150-0012, Japan

+81 (0)3 6427 5860

inquiry@housserep-tokyo.com

Transaction Type : Intermediate

Agent Fee : 1 month + tax

Website : www.housserep-tokyo.com



Remarks
Pet:additional deposit ( 1 month ) / Pet : additional 1 month for deposit