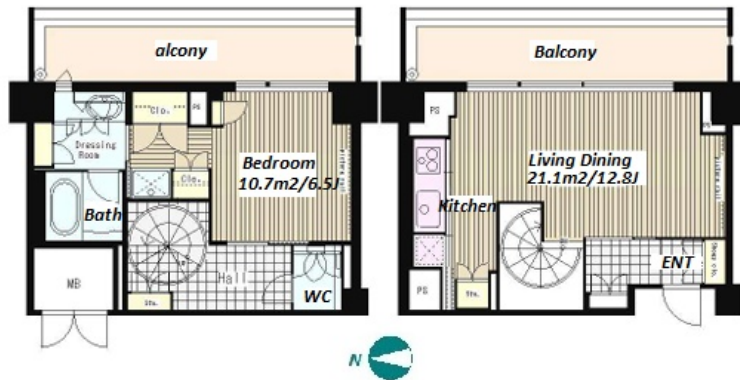


Property Name	TRESTAGE YOTSUYA	Unit No.	TYPE	Access	Yotsuyasannchoume Station on Marunouchi Line (3 min) Shinanomachi Station on JR Chuo Line Rapid Service (8 min)
		1110	Apt.		
Address	16-1, Samoncho, Shinjuku-Ku, Tokyo				



Lease Conditions

LAYOUT	1 BR		
SIZE	64.53 m ² /694.59 ft ²		
RENT	JPY 267,000 / month		
Management Fee	-		
Deposit	2 months	Key Money	1 month
Lease Term	Standard lease for 24 months		
Available	End, May, 2024		
Renewal Fee	1 month		
Agent Fee	1 month + tax		
Other Info	Key Replacement Fee : JPY20,000 Tax not included / Auto lock / Air-Con / Separated Toilet / Balcony / Loft/Maisonnette / CS/CATV / Flooring / IH Stoves / Dishwasher / Bathroom dryer		

Building Information

Completion	Feb, 2009	Earthquake Resistance	New
Structure	RC, 11 story		
Car Parking	TBC		
Bicycle Parking	for 1 space (Included)		
Music Instrument	-	Pet	-
Facilities	Motorcycle Parking (TBC) / Delivery box / Elevator		

Remarks

Renters Insurance : Required

*The actual Layout & Size may differ slightly from this floor plans & pictures.



HOUSEREP TOKYO INC.

ハウスレップトーキョー株式会社

#301, 1-4-15, Hiroo, Shibuya-ku, Tokyo 150-0012, Japan

+81 (0)3 6427 5860

inquiry@housserep-tokyo.com

Transaction Type : Intermediate

Agent Fee : 1 month + tax

Website : www.housserep-tokyo.com

