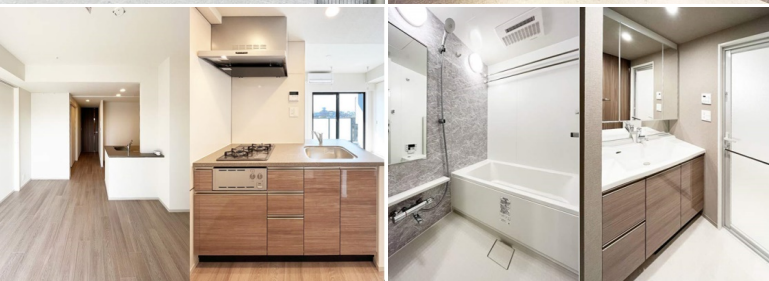


Property Name	ORCHID RESIDENCE SHIBUYA TOMIGAYA	Unit No.	TYPE	Access	Yoyogihachimann Station on Odakyu Line (9 min) Yoyogikouenn Station on Chiyoda Line (10 min)
		205	Apt.		
Address	2-14-3, Tomigaya, Shibuya-Ku, Tokyo				

Stylish Mid Rise Apt. near Komaba Park & Yoyogi Park



Lease Conditions			
LAYOUT	2 BR		
SIZE	46.12 m ² /496.43 ft ²		
RENT	JPY 285,000 / month		
Management Fee	JPY15,000/month		
Deposit	2 months	Key Money	1 month
Lease Term	Standard lease for 24 months		
Available	Now		
Renewal Fee	1 month		
Agent Fee	1 month + tax		
Other Info	Guarantor Company : TBC / No Key Money / Auto lock / Air-Con / Separated Toilet / Balcony / Internet Included / Flooring / Bathroom dryer / WIC		

Building Information			
Completion	Jan, 2024	Earthquake Resistance	New
Structure	RC, 13 story		
Car Parking	extra charge		
Bicycle Parking	(Included)		
Music Instrument	-	Pet	Allowed
Facilities	Motorcycle Parking (extra charge) / Near Large Parks / Delivery box / Elevator / 24h Garbage Drop-off / Newly-built (~1 y/o)		

Remarks
Renters Insurance : Required / Pet:additional deposit (1 month) + depreciation fee (1 month)

*The actual Layout & Size may differ slightly from this floor plans & pictures.



HOUSEREP TOKYO INC.

ハウスレップトーキョー株式会社

#301, 1-4-15, Hiroo, Shibuya-ku, Tokyo 150-0012, Japan

+81 (0)3 6427 5860

inquiry@housserrep-tokyo.com

Transaction Type : Intermediate

Agent Fee : 1 month + tax

Website : www.housserrep-tokyo.com

