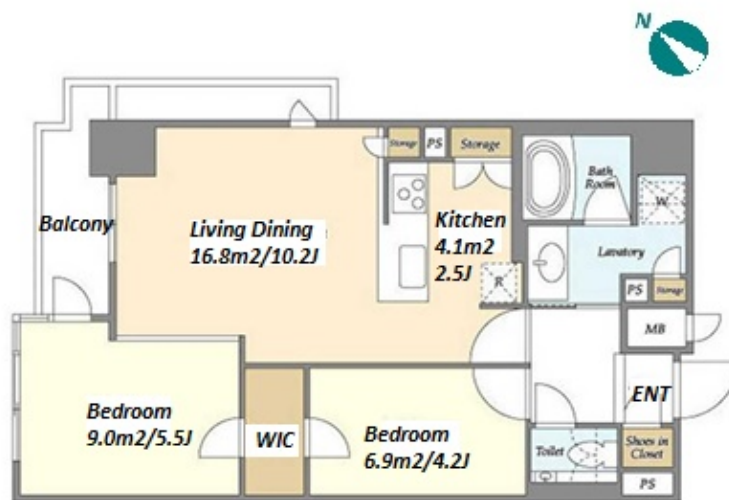


|               |                                   |          |      |        |  |
|---------------|-----------------------------------|----------|------|--------|--|
| Property Name | LIGHT TERRACE KURAMAE             | Unit No. | TYPE | Access | Kuramae Station on Oedo Line (2 min)<br>Kuramae Station on Toei Asakusa Line (3 min) |
|               |                                   | 1203     | Apt. |        |  |
| Address       | 2-14-10, Kuramae, Taito-Ku, Tokyo |          |      |        |  |

High rise apartment in TOKYO near Kuramae Sta.



| Lease Conditions |  |           |   |
|------------------|--|-----------|---|
| LAYOUT           | 2 BR   |           |   |
| SIZE             | 54.55 m²/587.17 ft²  |           |   |
| RENT             | JPY 240,000 / month  |           |   |
| Management Fee   | JPY10,000/month  |           |   |
| Deposit          | 2 months   | Key Money | - |
| Lease Term       | Standard lease for 24 months   |           |   |
| Available        | Mid, May, 2024   |           |   |
| Renewal Fee      | 1 month  |           |   |
| Agent Fee        | 1 month + tax  |           |   |
| Other Info       | Key Replacement Fee : JPY20,000 Tax not included / Guarantor Company : TBC / No Key Money / Auto lock / Air-Con / Separated Toilet / Balcony / Internet (Extra Charge) / Penalty Fee for Early Cancellation / Bathroom dryer / WIC |           |   |

| Building Information |   |                       |     |
|----------------------|---|-----------------------|-----|
| Completion           | Sep, 2019   | Earthquake Resistance | New |
| Structure            | RC, 15 story  |                       |     |
| Car Parking          | JPY31,000 ~ 38,000 + tax / month  |                       |     |
| Bicycle Parking      | JPY300 + tax / month  |                       |     |
| Music Instrument     | -   | Pet                   | N/A |
| Facilities           | Motorcycle Parking (extra charge) / Delivery box / Elevator / Security / Close to Station / 24h Garbage Drop-off / High-rise / Newly-built (~7 y/o) |                       |     |

| Remarks  |
|--|
| Renters Insurance : Required / Parking : 1 month for deposit |

\*The actual Layout & Size may differ slightly from this floor plans & pictures.



HOUSEREP TOKYO INC.

ハウスレップトーキョー株式会社

#301, 1-4-15, Hiroo, Shibuya-ku, Tokyo 150-0012, Japan

+81 (0)3 6427 5860 inquiry@housserep-tokyo.com

Transaction Type : Intermediate

Agent Fee : 1 month + tax

Website : www.housserep-tokyo.com

