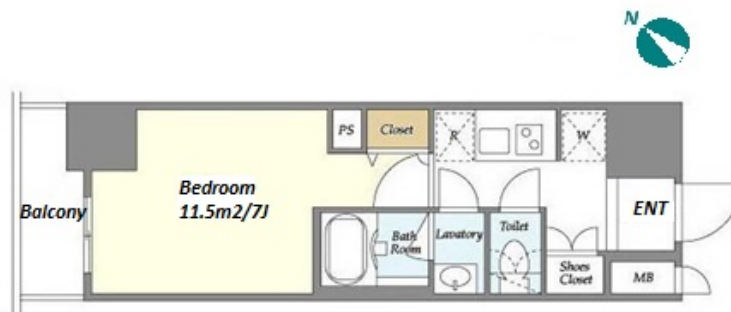


Property Name	LIGHT TERRACE KURAMAE	Unit No.	TYPE	Access	Kuramae Station on Oedo Line (2 min) Kuramae Station on Toei Asakusa Line (3 min)
		208	Apt.		
Address	2-14-10, Kuramae, Taito-Ku, Tokyo				

High rise apartment in TOKYO near Kuramae Sta.



Lease Conditions			
LAYOUT	Studio		
SIZE	25.52 m ² /274.69 ft ²		
RENT	JPY 106,000 / month		
Management Fee	JPY6,000/month		
Deposit	2 months	Key Money	-
Lease Term	Standard lease for 24 months		
Available	End, Apr, 2024		
Renewal Fee	1 month		
Agent Fee	1 month + tax		
Other Info	Key Replacement Fee : JPY20,000 Tax not included / Guarantor Company : TBC / No Key Money / Auto lock / Air-Con / Separated Toilet / Balcony / Internet (Extra Charge) / Penalty Fee for Early Cancellation / Bathroom dryer		

Building Information			
Completion	Sep, 2019	Earthquake Resistance	New
Structure	RC, 15 story		
Car Parking	JPY31,000 ~ 38,000 + tax / month		
Bicycle Parking	JPY300 + tax / month		
Music Instrument	-	Pet	N/A
Facilities	Motorcycle Parking (extra charge) / Delivery box / Elevator / Security / Close to Station / 24h Garbage Drop-off / High-rise / Newly-built (~7 y/o)		

*The actual Layout & Size may differ slightly from this floor plans & pictures.



HOUSEREP TOKYO INC.

ハウスレップトーキョー株式会社

#301, 1-4-15, Hiroo, Shibuya-ku, Tokyo 150-0012, Japan

+81 (0)3 6427 5860 inquiry@houserep-tokyo.com

Transaction Type : Intermediate

Agent Fee : 1 month + tax

Website : www.houserep-tokyo.com



Remarks
Renters Insurance : Required / Parking : 1 month for deposit