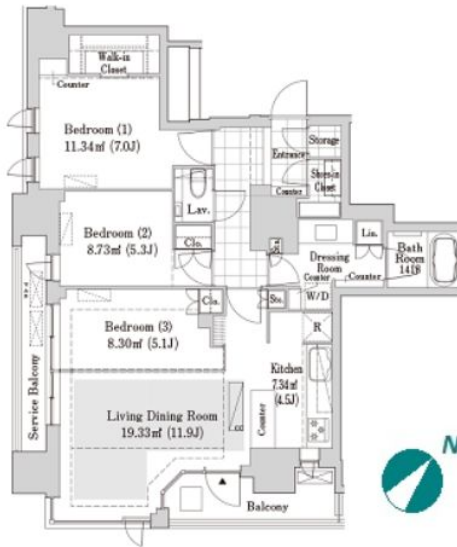
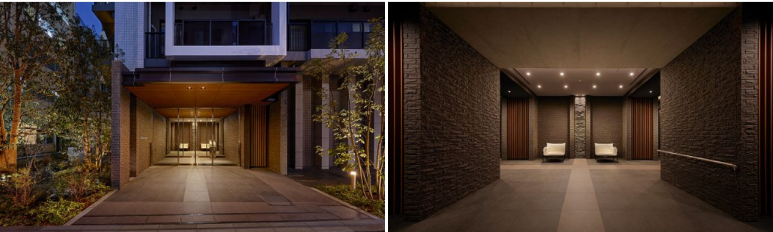



| | | | | | | | | | |
|---------------|--|-------------------------|--|----------|------|---------------------|--|-----------------------------------|--|
| FOR RENT | | Property ID No. :153177 | | | | HOUSEREP TOKYO INC. | | Website : www.housserep-tokyo.com | |
| Property Name | LIV CUORE JIMBOCHO | | | Unit No. | TYPE | Access | Jinnbouchou Station on Hanzomon Line (5 min) Jinnbouchou Station on Mita Line (5 min) Suidobashi Station on JR Chuo Line Rapid Service (7 min) | | |
| | | | | 1403 | Apt. | | | | |
| Address | 1-62-2, Kandajimbocho, Chiyoda-Ku, Tokyo | | | | | | | | |

Stylish modern apartment in Jimbocho, Chiyoda



| Lease Conditions | | | |
|----------------------|--|-----------------------|---------|
| LAYOUT | 3 BR | | |
| SIZE | 81.19 m²/873.92 ft² | | |
| RENT | JPY 528,000 / month | | |
| Management Fee | JPY20,000/month | | |
| Deposit | 2 months | Key Money | 1 month |
| Lease Term | Standard lease for 24 months | | |
| Available | Mid, May, 2024 | | |
| Renewal Fee | 1 month | | |
| Agent Fee | 1 month + tax | | |
| Other Info | Key Replacement Fee : JPY22,000 Tax not included / Auto lock / Air-Con / Separated Toilet / Internet Included / Internet (Extra Charge) / Penalty Fee for Early Cancellation / Flooring / Floor Heating / Bathroom dryer / WIC / Corner Unit | | |
| Building Information | | | |
| Completion | Dec, 2020 | Earthquake Resistance | New |
| Structure | RC, 14 story | | |
| Car Parking | TBC | | |
| Bicycle Parking | TBC | | |
| Music Instrument | - | Pet | |
| Facilities | Motorcycle Parking (TBC) / Janitor / Delivery box / Elevator / Security / Close to Station / 24h Garbage Drop-off | | |

| Remarks |
|--|
| Renters Insuarance : Required / Pet:additional deposit (1 month) |



HOUSEREP TOKYO INC.


ハウスレップトーキョー株式会社

#301, 1-4-15, Hiroo, Shibuya-ku, Tokyo 150-0012, Japan
 +81 (0)3 6427 5860 inquiry@housserep-tokyo.com

Transaction Type : Intermediate

Agent Fee : 1 month + tax

Website : www.housserep-tokyo.com



*The actual Layout & Size may differ slightly from this floor plans & pictures.