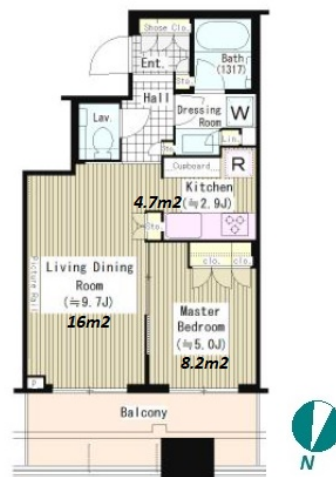


FOR RENT		Property ID No. :153161		HOUSEREP TOKYO INC.		Website : www.housserep-tokyo.com	
Property Name	CAPITAL GATE PLACE THE TOWER		Unit No.	TYPE	Access	Tsukishima Station on Yurakucho Line (1 min) Tsukishima Station on Oedo Line (1 min)	
Address	1-5-1, Tsukishima, Chuo-Ku, Tokyo		3810	Apt.			


Modern tower residence directly connected to Tsukishima stn.



Lease Conditions			
LAYOUT	1 BR		
SIZE	41.88 m²/450.79 ft²		
RENT	JPY 220,000 / month		
Management Fee	JPY15,000/month		
Deposit	1 month	Key Money	2 months
Lease Term	Standard lease for 24 months		
Available	End, May, 2024		
Renewal Fee	1 month		
Agent Fee	1 month + tax		
Other Info	Key Replacement Fee : JPY20,000 Tax not included / Auto lock / Air-Con / Separated Toilet / Balcony / Internet (Extra Charge) / CS/CATV / Flooring / Floor Heating / Bathroom dryer		

Building Information			
Completion	Aug, 2015	Earthquake Resistance	New
Structure	RC, 53 story		
Car Parking	TBC		
Bicycle Parking	TBC		
Music Instrument	-	Pet	-
Facilities	Motorcycle Parking (TBC) / Near Large Parks / Janitor / Delivery box / Elevator		

Remarks
Renters Insuarance : Required



HOUSEREP TOKYO INC.


ハウスレップトーキョー株式会社

#301, 1-4-15, Hiroo, Shibuya-ku, Tokyo 150-0012, Japan
 +81 (0)3 6427 5860 inquiry@housserep-tokyo.com

Transaction Type : Intermediate

Agent Fee : 1 month + tax

Website : www.housserep-tokyo.com



*The actual Layout & Size may differ slightly from this floor plans & pictures.