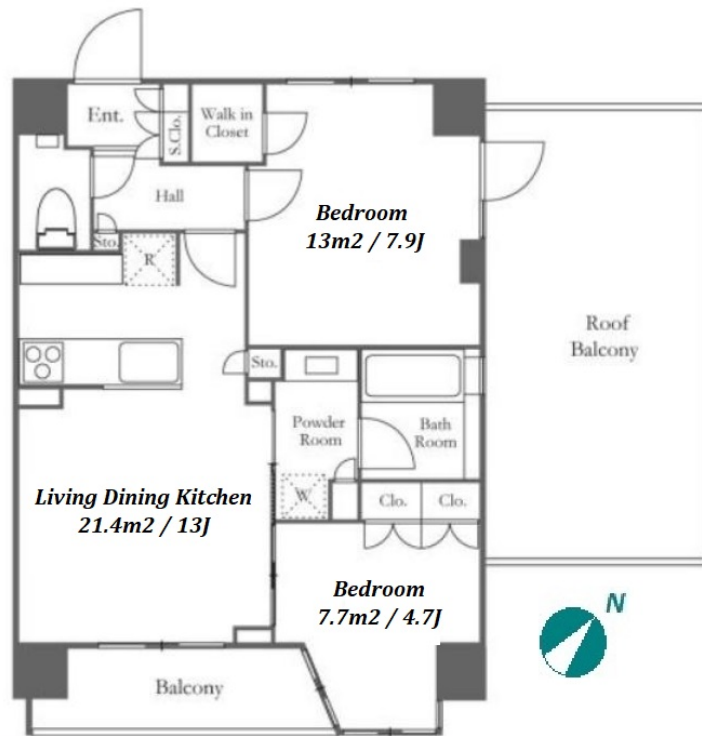


Property Name	OPEN RESIDENCIA DAIKANYAMA THE HOUSE	Unit No.	TYPE	Access	Daikannyama Station on Toyoko Line (5 min) Ebisu Station on JR Yamanote Line (9 min) Ebisu Station on Hibiya Line (9 min)
		4F	Apt.		
Address	10-7, Daikanyamacho, Shibuya-Ku, Tokyo				



Lease Conditions			
LAYOUT	2 BR		
SIZE	58.16 m²/626.02 ft²		
RENT	JPY 450,000 / month		
Management Fee	-		
Deposit	2 months	Key Money	1 month
Lease Term	Fixed term lease for 36 months		
Available	Now		
Renewal Fee	-		
Agent Fee	1 month + tax		
Other Info	Auto lock / Air-Con / Separated Toilet / Roof Balcony / Flooring / Dishwasher / Bathroom dryer / WIC / Corner Unit		

Building Information			
Completion	Dec, 2018	Earthquake Resistance	New
Structure	RC, 6 story		
Car Parking	extra charge		
Bicycle Parking	-		
Music Instrument	-	Pet	Negotiable
Facilities	Janitor / Delivery box / Elevator / 24h Garbage Drop-off / Newly-built (~7 y/o)		

Remarks
Renters Insurance : Required

\*The actual Layout & Size may differ slightly from this floor plans & pictures.



HOUSEREP TOKYO INC.

ハウスレップトーキョー株式会社

#301, 1-4-15, Hiroo, Shibuya-ku, Tokyo 150-0012, Japan

+81 (0)3 6427 5860

inquiry@houserep-tokyo.com

Transaction Type : Intermediate

Agent Fee : 1 month + tax

Website : www.houserep-tokyo.com

