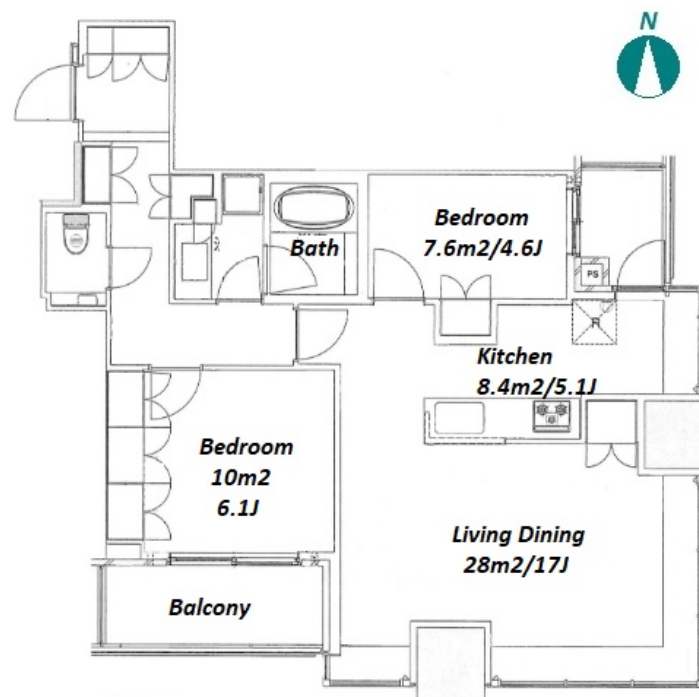
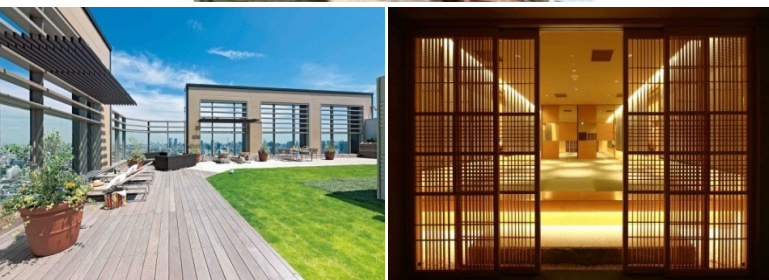


Property Name	PARK TOWER GRAN SKY	Unit No.	TYPE	Access	Oosaki Station on JR Yamanote Line (6 min) Gotanda Station on Toei Asakusa Line (6 min) Gotanda Station on JR Yamanote Line (6 min)
		1012	Apt.		
Address	2-10-1, Higashigotanda, Shinagawa-Ku, Tokyo				

Luxury High Rise Apartment w/ Amenities in Gotanda / Osaki



Lease Conditions			
LAYOUT	2 BR		
SIZE	76.87 m²/827.42 ft²		
RENT	JPY 380,000 / month		
Management Fee	JPY15,000/month		
Deposit	2 months	Key Money	-
Lease Term	Fixed term lease for 48 months		
Available	Now		
Renewal Fee	-		
Agent Fee	1 month + tax		
Other Info	No Key Money / Auto lock / Air-Con / Separated Toilet / Balcony / Penalty Fee for Early Cancellation / Garden/Terrace / Roof Balcony / Floor Heating / Dishwasher / Bathroom dryer / Corner Unit		

Building Information			
Completion	Jun, 2010	Earthquake Resistance	New
Structure	RC, 44 story		
Car Parking	JPY38,000 + tax / month		
Bicycle Parking	N/A		
Music Instrument	-	Pet	Negotiable
Facilities	Motorcycle Parking (TBC) / Front desk / Delivery box		

Remarks
Renters Insurance : Required

*The actual Layout & Size may differ slightly from this floor plans & pictures.



HOUSEREP TOKYO INC.

ハウスレップトーキョー株式会社

#301, 1-4-15, Hiroo, Shibuya-ku, Tokyo 150-0012, Japan

+81 (0)3 6427 5860

inquiry@housserep-tokyo.com

Transaction Type : Intermediate

Agent Fee : 1 month + tax

Website : www.housserep-tokyo.com

