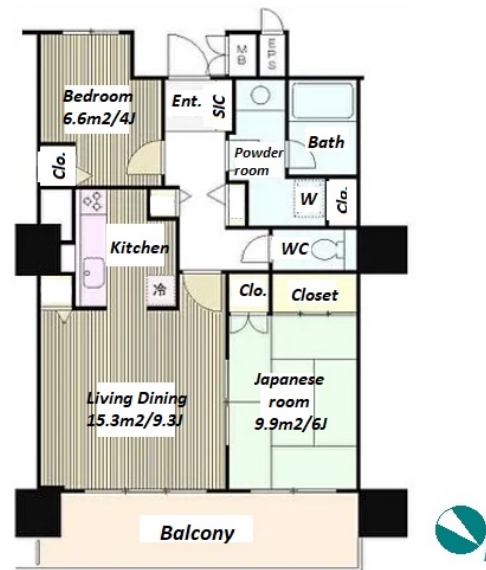
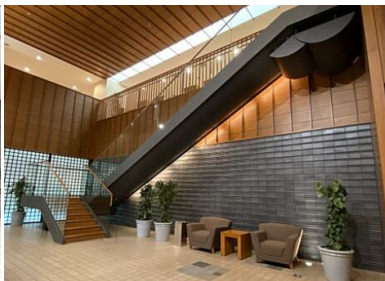
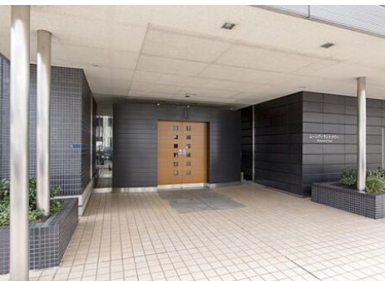


Property Name	MOON ISLAND TOWER	Unit No.	TYPE	Access	Tsukishima Station on Yurakucho Line (1 min)
		1201	Apt.		
Address	2-10-1, Tsukishima, Chuo-Ku, Tokyo				

High rise apartment directly connected with Tsukishima Sta.



Lease Conditions			
LAYOUT	2 BR		
SIZE	59.72 m ² /642.82 ft ²		
RENT	JPY 215,000 / month		
Management Fee	JPY20,000/month		
Deposit	1 month	Key Money	2 months
Lease Term	Standard lease for 24 months		
Available	Mid, Apr, 2024		
Renewal Fee	1 month		
Agent Fee	1 month + tax		
Other Info	Key Replacement Fee : JPY20,000 Tax not included / Auto lock / Separated Toilet / Balcony / Musical Instrument Negotiable / CS/CATV / Flooring / Floor Heating / Bathroom dryer		

Building Information			
Completion	Jul, 2002	Earthquake Resistance	New
Structure	RC, 38 story		
Car Parking	extra charge		
Bicycle Parking	TBC		
Music Instrument	Negotiable	Pet	-
Facilities	Motorcycle Parking (TBC) / Front desk / Delivery box / Elevator / Security / Close to Station / High-rise		

Remarks
Renters Insurance : Required

*The actual Layout & Size may differ slightly from this floor plans & pictures.



HOUSEREP TOKYO INC.

ハウスレップトーキョー株式会社

#301, 1-4-15, Hiroo, Shibuya-ku, Tokyo 150-0012, Japan

+81 (0)3 6427 5860

inquiry@houserep-tokyo.com

Transaction Type : Intermediate

Agent Fee : 1 month + tax

Website : www.houserep-tokyo.com

