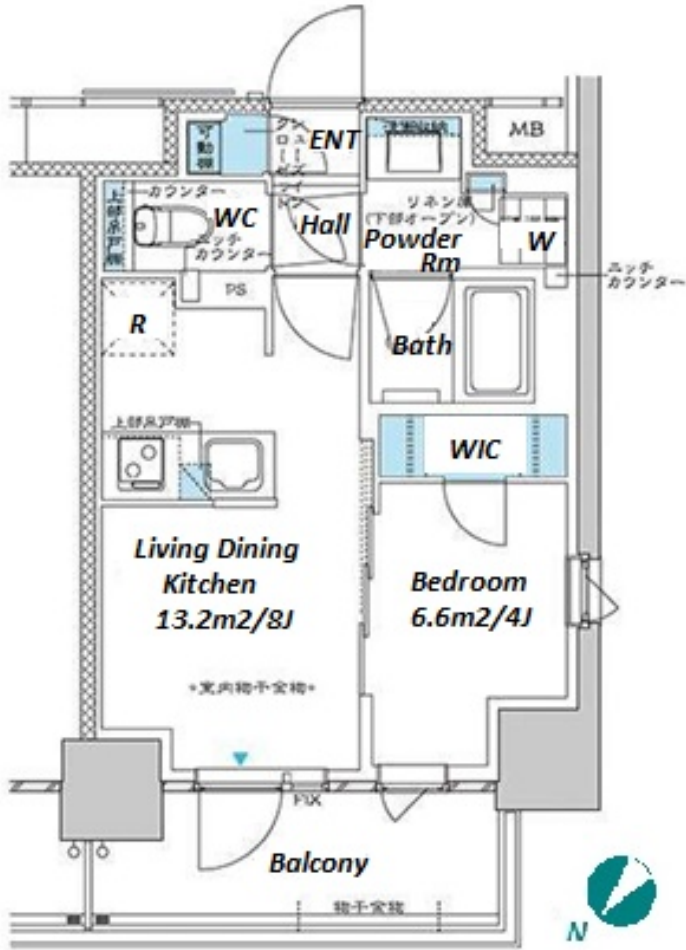



| | | | | | | | | | |
|---------------|-------------------------------------|-------------------------|--|----------|------|---------------------|---|-----------------------------------|--|
| FOR RENT | | Property ID No. :153112 | | | | HOUSEREP TOKYO INC. | | Website : www.housserep-tokyo.com | |
| Property Name | PREMIST ITABASHI | | | Unit No. | TYPE | Access | Itabashikuyakushomae Station on Mita Line (5 min) | | |
| | | | | 403 | Apt. | | | | |
| Address | 3-4-3, Itabashi, Itabashi-Ku, Tokyo | | | | | | | | |



*The actual Layout & Size may differ slightly from this floor plans & pictures.



HOUSEREP TOKYO INC.


ハウズレップトーキョー株式会社

#301, 1-4-15, Hiroo, Shibuya-ku, Tokyo 150-0012, Japan
 +81 (0)3 6427 5860 inquiry@housserep-tokyo.com

Transaction Type : Intermediate

Agent Fee : 1 month + tax

Website : www.housserep-tokyo.com



| Lease Conditions | | | |
|--|---|-----------------------|---------|
| LAYOUT | 1 BR | | |
| SIZE | 31.05 m²/334.21 ft² | | |
| RENT | JPY 128,000 / month | | |
| Management Fee | JPY12,000/month | | |
| Deposit | 2 months | Key Money | - |
| Lease Term | Standard lease for 24 months | | |
| Available | Mid, May, 2024 | | |
| Renewal Fee | 1 month | | |
| Agent Fee | 1 month + tax | | |
| Other Info | Key Replacement Fee : JPY20,000 Tax not included / Guarantor Company : TBC / No Key Money / Auto lock / Air-Con / Separated Toilet / Balcony / Penalty Fee for Early Cancellation / CS/CATV / Flooring / Bathroom dryer / WIC | | |
| Building Information | | | |
| Completion | Mar, 2021 | Earthquake Resistance | New |
| Structure | RC, 14 story | | |
| Car Parking | extra charge | | |
| Bicycle Parking | for 1 space (Included) | | |
| Music Instrument | - | Pet | Allowed |
| Facilities | Motorcycle Parking (TBC) / Delivery box / Security | | |
| Remarks | | | |
| Renters Insurance : Required / Bicycle parking : Registration fee: JPY.2,000+tax / Pet:additional deposit (1 month) / Pet : a small dog or a cat | | | |