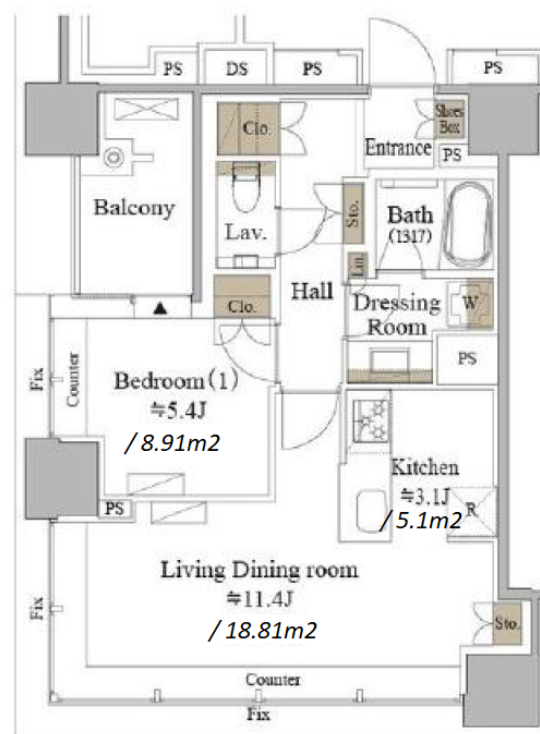


| | | | | | |
|---------------|---|----------|------|--------|--|
| Property Name | MEGURO MARC RESIDENCE TOWER | Unit No. | TYPE | Access | Meguro Station on JR Yamanote Line (8 min) Meguro Station on Mita Line (8 min) Gotanda Station on JR Yamanote Line (9 min) |
| | | 1410 | Apt. | | |
| Address | 3-4-10, Nishigotanda, Shinagawa-Ku, Tokyo | | | | |

Modern Stylish Tower Residence in Meguro



| Lease Conditions | | | |
|------------------|---|-----------|---------|
| LAYOUT | 1 BR | | |
| SIZE | 50.72 m²/545.94 ft² | | |
| RENT | JPY 285,000 / month | | |
| Management Fee | - | | |
| Deposit | 2 months | Key Money | 1 month |
| Lease Term | Fixed term lease for 24 months | | |
| Available | End, Apr, 2024 | | |
| Renewal Fee | - | | |
| Agent Fee | 1 month + tax | | |
| Other Info | Guarantor Company : TBC / Auto lock / Air-Con / Separated Toilet / Balcony / Internet Included / Penalty Fee for Early Cancellation / Flooring / Dishwasher | | |

| Building Information | | | |
|----------------------|---|-----------------------|-----|
| Completion | Oct, 2022 | Earthquake Resistance | New |
| Structure | RC, 24 story | | |
| Car Parking | JPY45,000 ~ 60,000 + tax / month | | |
| Bicycle Parking | JPY300 ~ 3,000 + tax / month | | |
| Music Instrument | - | Pet | |
| Facilities | Motorcycle Parking (JPY5,000 ~ 15,000 + tax / month) / Concierge / Elevator / 24h Garbage Drop-off / High-rise / Newly-built (~7 y/o) | | |

| Remarks |
|--|
| Fixed term lease : Re-contract fee : 1 month / Renters Insurance : Required / Pet:additional deposit (1 month) |

*The actual Layout & Size may differ slightly from this floor plans & pictures.



HOUSEREP TOKYO INC.

ハウスレップトーキョー株式会社

#301, 1-4-15, Hiroo, Shibuya-ku, Tokyo 150-0012, Japan

+81 (0)3 6427 5860

inquiry@housserep-tokyo.com

Transaction Type : Intermediate

Agent Fee : 1 month + tax

Website : www.housserep-tokyo.com

