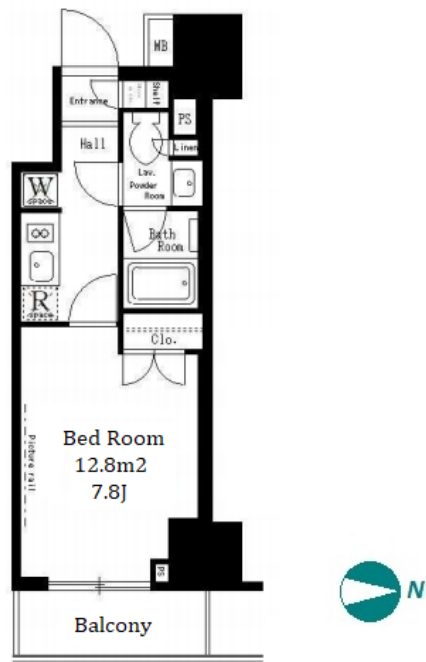


FOR RENT		Property ID No. :153064			HOUSEREP TOKYO INC.		Website : www.housserep-tokyo.com	
Property Name	LEFOND PROGRES BUNKYO YUSHIMA		Unit No.	TYPE	Access	Yushima Station on Chiyoda Line (3 min) Okachimachi Station on JR Yamanote Line (9 min)		
			703	Apt.				
Address	3-12-13, Yushima, Bunkyo-Ku, Tokyo							

Stylish pet friendly Apt. near "Yushima Tenjin Shrine" and "Ueno Park"



Lease Conditions		
LAYOUT	Studio	
SIZE	25.42 m²/273.61 ft²	
RENT	JPY 139,000 / month	
Management Fee	JPY10,000/month	
Deposit	1 month	Key Money -
Lease Term	Standard lease for 24 months	
Available	Mid, May, 2024	
Renewal Fee	1 month	
Agent Fee	1 month + tax	
Other Info	Key Replacement Fee : JPY20,000 Tax not included / Guarantor Company : TBC / No Key Money / Auto lock / Air-Con / Separated Toilet / Balcony / Internet Included / Penalty Fee for Early Cancellation / Flooring / Bathroom dryer	

Building Information			
Completion	Sep, 2020	Earthquake Resistance	New
Structure	RC, 14 story		
Car Parking	N/A		
Bicycle Parking	for 1 space (Included)		
Music Instrument	-	Pet	Allowed
Facilities	Motorcycle Parking (JPY3,000/ month) / Within 20 min to Tokyo station by car / Near Large Parks / Janitor / Delivery box / Elevator		

Remarks
Bicycle parking : 2,000yen+tax for bike sticker / Pet:additional deposit (1 month) / Pet : Additional 1 month for deposit



HOUSEREP TOKYO INC.

ハウスレップトーキョー株式会社

#301, 1-4-15, Hiroo, Shibuya-ku, Tokyo 150-0012, Japan
 +81 (0)3 6427 5860 inquiry@housserep-tokyo.com

Transaction Type : Intermediate

Agent Fee : 1 month + tax

Website : www.housserep-tokyo.com



*The actual Layout & Size may differ slightly from this floor plans & pictures.