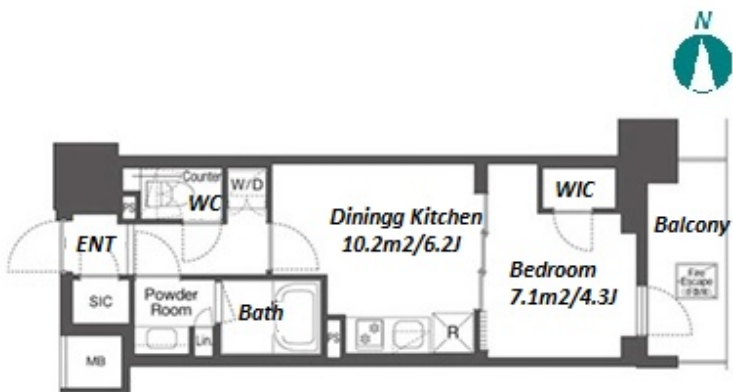
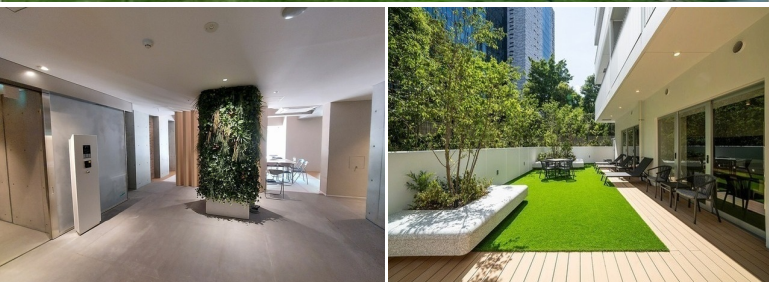


Property Name	COMFORIA HIGASHISHINJUKU	Unit No.	TYPE	Access	Higashishinnjuku Station on Oedo Line (2 min) Shinnjukusannchoume Station on Marunouchi Line (9 min)
		803	Apt.		
Address	6-27-48, Shinjuku, Shinjuku-Ku, Tokyo				

Mid rise apartment in TOKYO near Higashishinjuku Sta.



Lease Conditions			
LAYOUT	1 BR		
SIZE	30.99 m²/333.57 ft²		
RENT	JPY 199,000 / month		
Management Fee	JPY10,000/month		
Deposit	2 months	Key Money	-
Lease Term	Standard lease for 24 months		
Available	Now		
Renewal Fee	1 month		
Agent Fee	1 month + tax		
Other Info	Guarantor Company : TBC / No Key Money / Auto lock / Air-Con / Separated Toilet / Balcony / Internet Included / Penalty Fee for Early Cancellation / Flooring / Bathroom dryer / WIC		

Building Information			
Completion	Jul, 2023	Earthquake Resistance	New
Structure	RC, 14 story		
Car Parking	-		
Bicycle Parking	(Included)		
Music Instrument	-	Pet	Allowed
Facilities	Delivery box / Elevator / Security / Close to Station / 24h Garbage Drop-off / Newly-built (~1 y/o)		

Remarks
Renters Insurance : Required / Pet:additional deposit (1 month) / Pet : a small dog or up to two cats

*The actual Layout & Size may differ slightly from this floor plans & pictures.



HOUSEREP TOKYO INC.

ハウスレップトーキョー株式会社

#301, 1-4-15, Hiroo, Shibuya-ku, Tokyo 150-0012, Japan

+81 (0)3 6427 5860

inquiry@housserep-tokyo.com

Transaction Type : Intermediate

Agent Fee : 1 month + tax

Website : www.housserep-tokyo.com

