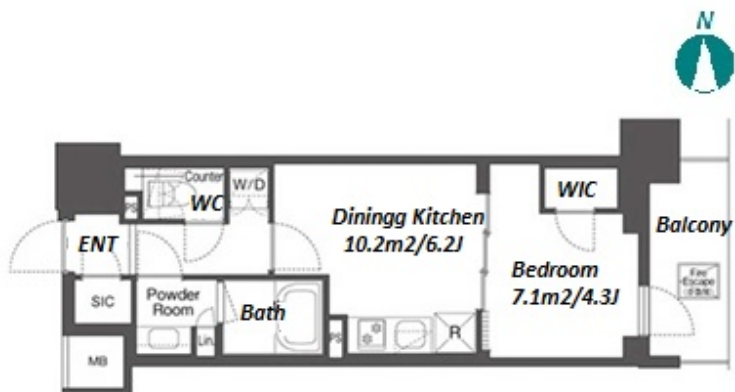
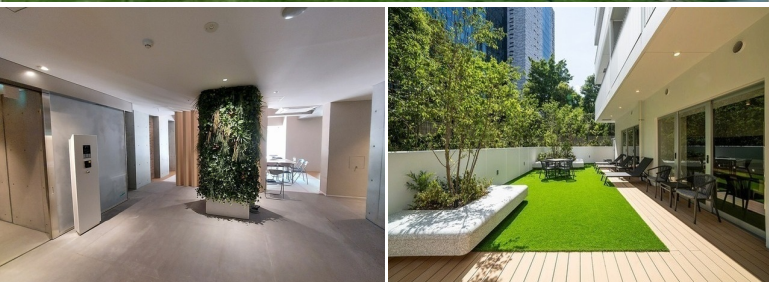


Property Name	COMFORIA HIGASHISHINJUKU	Unit No.	TYPE	Access	Higashishinnjuku Station on Oedo Line (2 min) Shinnjukusannchoume Station on Marunouchi Line (9 min)
		703	Apt.		
Address	6-27-48, Shinjuku, Shinjuku-Ku, Tokyo				

Mid rise apartment in TOKYO near Higashishinjuku Sta.



Lease Conditions		
LAYOUT	1 BR	
SIZE	30.99 m²/333.57 ft²	
RENT	JPY 190,000 / month	
Management Fee	JPY10,000/month	
Deposit	2 months	Key Money -
Lease Term	Standard lease for 24 months	
Available	Now	
Renewal Fee	1 month	
Agent Fee	1 month + tax	
Other Info	Guarantor Company : TBC / No Key Money / Auto lock / Air-Con / Separated Toilet / Balcony / Internet Included / Penalty Fee for Early Cancellation / Flooring / Bathroom dryer / WIC	

Building Information			
Completion	Jul, 2023	Earthquake Resistance	New
Structure	RC, 14 story		
Car Parking	-		
Bicycle Parking	( Included )		
Music Instrument	-	Pet	Allowed
Facilities	Delivery box / Elevator / Security / Close to Station / 24h Garbage Drop-off / Newly-built (~1 y/o)		

Remarks
Renters Insurance : Required / Pet:additional deposit ( 1 month ) / Pet : a small dog or up to two cats

\*The actual Layout & Size may differ slightly from this floor plans & pictures.



HOUSEREP TOKYO INC.

ハウスレップトーキョー株式会社

#301, 1-4-15, Hiroo, Shibuya-ku, Tokyo 150-0012, Japan

+81 (0)3 6427 5860

inquiry@housserep-tokyo.com

Transaction Type : Intermediate

Agent Fee : 1 month + tax

Website : www.housserep-tokyo.com

