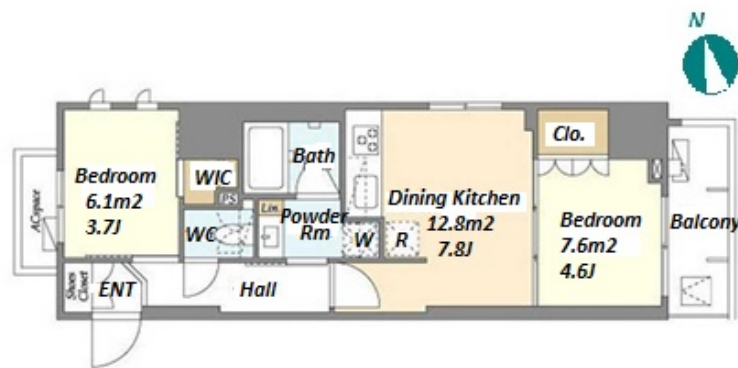


Property Name	GIOENT ASAKUSA KAMINARIMON	Unit No.	TYPE	Access	Asakusa Station on Ginza Line (4 min) Asakusa Station on Toei Asakusa Line (4 min) Tawaramachi Station on Ginza Line (6 min)
		501	Apt.		
Address	1-2-10, Kaminarimon, Taito-Ku, Tokyo				

Stylish Mid Rise Apt in a Historical Neighborhood of Asakusa



Lease Conditions		
LAYOUT	2 BR	
SIZE	40.85 m²/439.7 ft²	
RENT	JPY 194,000 / month	
Management Fee	JPY15,000/month	
Deposit	2 months	Key Money -
Lease Term	Standard lease for 24 months	
Available	End, May, 2024	
Renewal Fee	1 month	
Agent Fee	1 month + tax	
Other Info	Key Replacement Fee : JPY30,000 Tax not included / Guarantor Company : TBC / No Key Money / Free rent / Auto lock / Air-Con / Separated Toilet / Balcony / Internet Included / Penalty Fee for Early Cancellation / CS/CATV / Flooring / Bathroom dryer / WIC / Corner Unit	

Building Information			
Completion	Feb, 2023	Earthquake Resistance	New
Structure	RC, 11 story		
Car Parking	extra charge		
Bicycle Parking	(Included)		
Music Instrument	-	Pet	N/A
Facilities	Motorcycle Parking (extra charge) / Janitor / Delivery box / Elevator / Close to Station / 24h Garbage Drop-off / Newly-built (~1 y/o)		

*The actual Layout & Size may differ slightly from this floor plans & pictures.



HOUSEREP TOKYO INC.

ハウスレップトーキョー株式会社

#301, 1-4-15, Hiroo, Shibuya-ku, Tokyo 150-0012, Japan

+81 (0)3 6427 5860

inquiry@housserrep-tokyo.com

Transaction Type : Intermediate

Agent Fee : 1 month + tax

Website : www.housserrep-tokyo.com



Remarks
Renters Insurance : Required