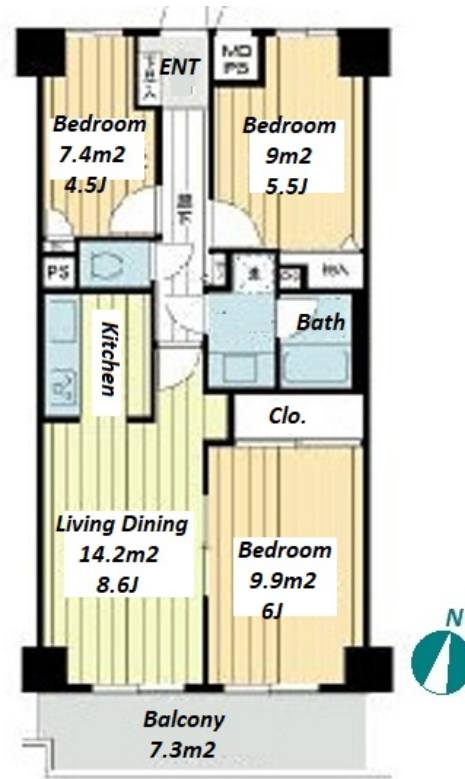
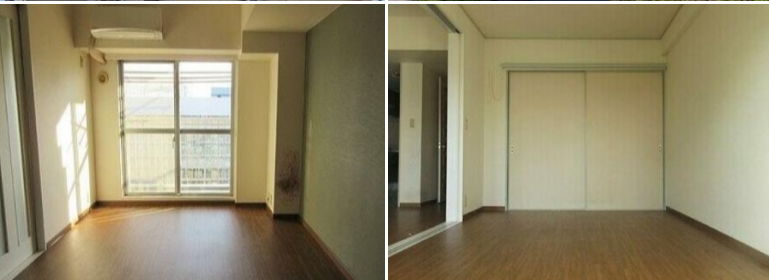


Property Name	LIONS MANSION TOYOCHO DAI 3	Unit No.	TYPE	Access	Touyouchou Station on Tozai Line (6 min) Sumiyoshi Station on Toei Shinjuku Line (36 min) Kinnshichou Station on JR Chuo-Sobu Line (52 min)
		905	Apt.		
Address	2-2-11, Minamisuna, Koto-Ku, Tokyo				

Mid-rise pet-friendly apartment close to Toyocho Sta.



Lease Conditions			
LAYOUT	3 BR		
SIZE	62.44 m²/672.09 ft²		
RENT	JPY 188,000 / month		
Management Fee	JPY10,000/month		
Deposit	1 month	Key Money	1 month
Lease Term	Standard lease for 24 months		
Available	Now		
Renewal Fee	1 month		
Agent Fee	1 month + tax		
Other Info	Air-Con / Separated Toilet / Internet (Extra Charge) / No Smoking / Bathroom dryer		

Building Information			
Completion	Jul, 1986	Earthquake Resistance	New
Structure	SRC, 12 story		
Car Parking	N/A		
Bicycle Parking	-		
Music Instrument	-	Pet	
Facilities	Elevator / Security		

Remarks
Renters Insurance : Required / Tenant support fee: 770yen / Pet:additional deposit ( 1 month )

\*The actual Layout & Size may differ slightly from this floor plans & pictures.



HOUSEREP TOKYO INC.

ハウスレップトーキョー株式会社

#301, 1-4-15, Hiroo, Shibuya-ku, Tokyo 150-0012, Japan

+81 (0)3 6427 5860

inquiry@houserrep-tokyo.com

Transaction Type : Intermediate

Agent Fee : 1 month + tax

Website : www.houserrep-tokyo.com

