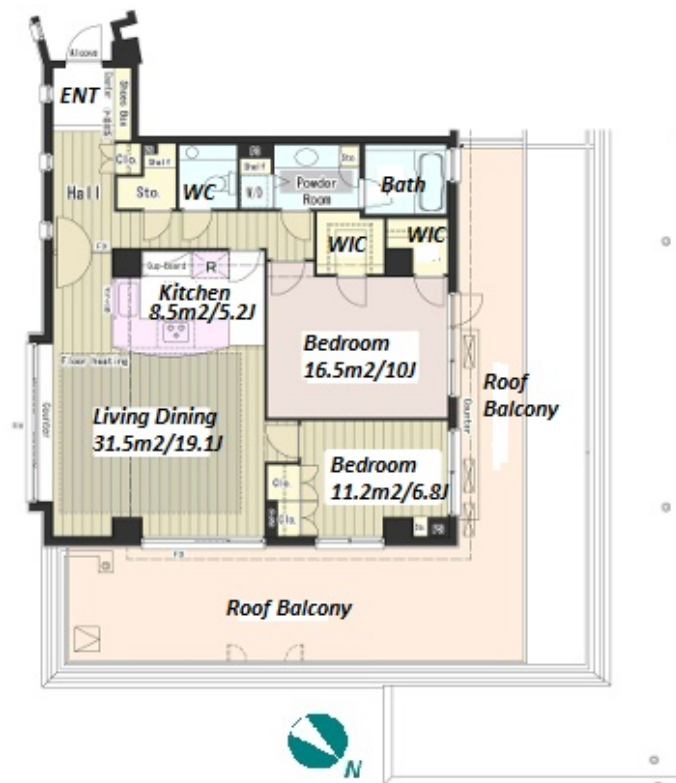


Property Name	GAIEN RESIDENCE	Unit No.	TYPE	Access	Shinanomachi Station on JR Chuo Line Rapid Service (7 min) Yotsuya Station on Namboku Line (12 min)
		508	Apt.		
Address	24, Minamimotomachi, Shinjuku-Ku, Tokyo				

## Luxury Residence at "Gaien - the Outer Garden of Meiji Shrine"



\*The actual Layout & Size may differ slightly from this floor plans & pictures.

Lease Conditions			
LAYOUT	2 BR		
SIZE	101.71 m²/1094.79 ft²		
RENT	JPY 480,000 / month		
Management Fee	-		
Deposit	2 months	Key Money	2 months
Lease Term	Standard lease for 24 months		
Available	End, Apr, 2024		
Renewal Fee	1 month		
Agent Fee	1 month + tax		
Other Info	Key Replacement Fee : JPY20,000 Tax not included / Auto lock / Air-Con / Separated Toilet / Penalty Fee for Early Cancellation / Musical Instrument Negotiable / Roof Balcony / Flooring / Carpet / Floor Heating / Dishwasher / Oven / Bathroom dryer / WIC		
Building Information			
Completion	Oct, 2004	Earthquake Resistance	New
Structure	RC, 7 story		
Car Parking	extra charge		
Bicycle Parking	TBC		
Music Instrument	Negotiable	Pet	-
Facilities	Motorcycle Parking (TBC) / Near Large Parks / French Community / Janitor / Delivery box / Elevator		

Remarks
Renters Insurance : Required



HOUSEREP TOKYO INC.

ハウスレップトーキョー株式会社

#301, 1-4-15, Hiroo, Shibuya-ku, Tokyo 150-0012, Japan

+81 (0)3 6427 5860

inquiry@housserep-tokyo.com

Transaction Type : Intermediate

Agent Fee : 1 month + tax

Website : www.housserep-tokyo.com

