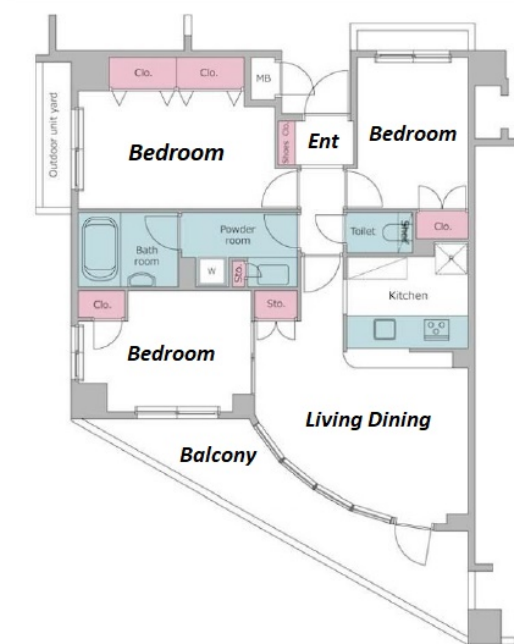


Property Name	RESIDIA SETAGAYA TSURUMAKI	Unit No.	TYPE	Access	Komazawadaigaku Station on Denentoshi Line (10 min) Sakurashinnmachi Station on Denentoshi Line (11 min)
		206	Apt.		
Address	2-10-9, Tsurumaki, Setagaya-Ku, Tokyo				



Lease Conditions		
LAYOUT	3 BR	
SIZE	63.61 m <sup>2</sup> /684.69 ft <sup>2</sup>	
RENT	JPY 295,000 / month	
Management Fee	JPY15,000/month	
Deposit	1 month	Key Money -
Lease Term	Standard lease for 24 months	
Available	Now	
Renewal Fee	1 month	
Agent Fee	1 month + tax	
Other Info	No Key Money / Auto lock / Air-Con / Separated Toilet / Balcony / Internet (Extra Charge) / Penalty Fee for Early Cancellation / Flooring / Bathroom dryer	

Building Information			
Completion	Mar, 2002	Earthquake Resistance	New
Structure	RC, 5 story		
Car Parking	TBC		
Bicycle Parking	TBC		
Music Instrument	-	Pet	N/A
Facilities	Motorcycle Parking (TBC) / Near Large Parks / Janitor / Delivery box / Elevator		

Remarks
Renters Insurance : Required / Internet usage fee: 1,500yen+tax/month

\*The actual Layout & Size may differ slightly from this floor plans & pictures.



HOUSEREP TOKYO INC.

ハウズレップトーキョー株式会社

#301, 1-4-15, Hiroo, Shibuya-ku, Tokyo 150-0012, Japan

+81 (0)3 6427 5860

inquiry@housserep-tokyo.com

Transaction Type : Intermediate

Agent Fee : 1 month + tax

Website : www.housserep-tokyo.com

