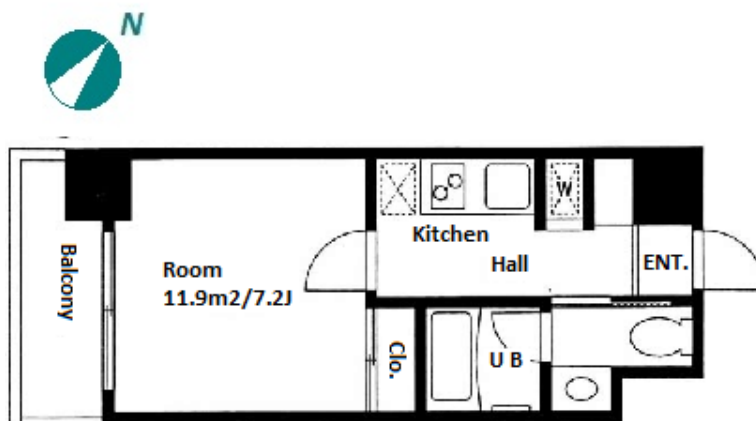


Property Name	RESIDIA NAKAMEGURO II	Unit No.	TYPE	Access	Nakameguro Station on Toyoko Line (10 min) Ebisu Station on JR Yamanote Line (18 min)
		301	Apt.		
Address	2-9-11, Nakameguro, Meguro-Ku, Tokyo				

## Mid-rise Apartment in Nakameguro, near "Meguro River"



Lease Conditions			
LAYOUT	Studio		
SIZE	24.89 m²/267.91 ft²		
RENT	JPY 140,000 / month		
Management Fee	JPY10,000/month		
Deposit	2 months	Key Money	-
Lease Term	Standard lease for months		
Available	Early, Apr, 2024		
Renewal Fee	1 month		
Agent Fee	1 month + tax		
Other Info	Key Replacement Fee : JPY18,000 Tax not included / No Key Money / Auto lock / Renovated / Air-Con / Separated Toilet / Balcony / Internet (Extra Charge) / Penalty Fee for Early Cancellation / Flooring / Bathroom dryer		

Building Information			
Completion	Aug, 2006	Earthquake Resistance	New
Structure	RC, 11 story		
Car Parking	TBC		
Bicycle Parking	N/A		
Music Instrument	-	Pet	-
Facilities	Within 20 min to Roppongi by train / Near Large Parks / Elevator		

Remarks
Renters Insurance : Required / Tenant membership fee: 10,000yen+tax/2years / Internet subscription fee: 1,500yen+tax/month

\*The actual Layout & Size may differ slightly from this floor plans & pictures.



**HOUSE REP TOKYO INC.**

ハウスレップトーキョー株式会社

#301, 1-4-15, Hiroo, Shibuya-ku, Tokyo 150-0012, Japan

+81 (0)3 6427 5860

inquiry@houserep-tokyo.com

Transaction Type : Intermediate

Agent Fee : 1 month + tax

Website : www.houserep-tokyo.com

