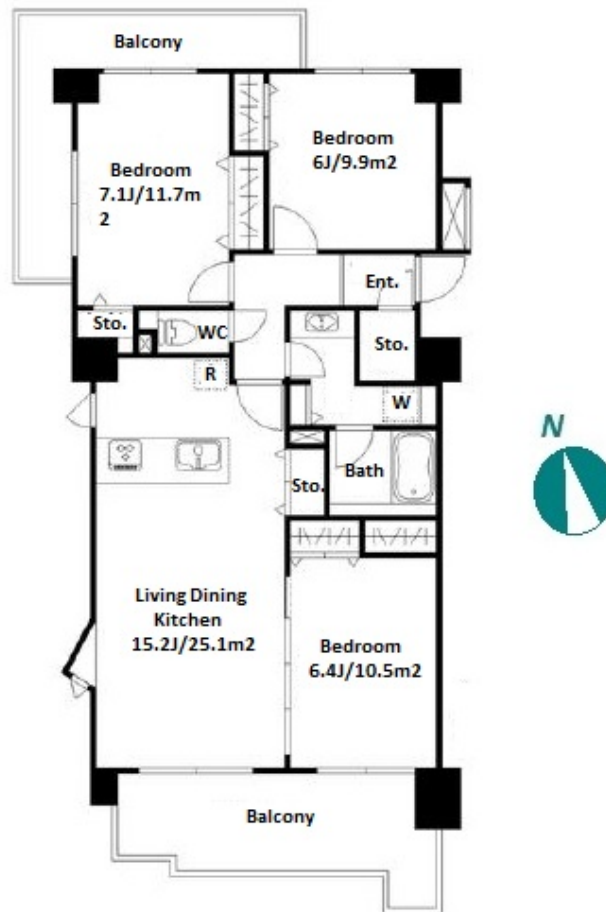
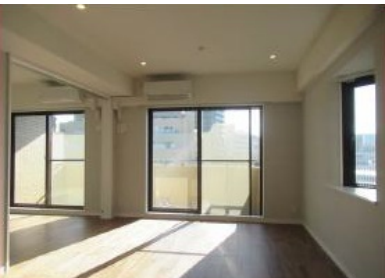


Property Name	TOWA CITY HOMES IKEDAYAMA	Unit No.	TYPE	Access	Gotanda Station on JR Yamanote Line (4 min) Takanawadai Station on Toei Asakusa Line (7 min)
		701	Apt.		
Address	4-11-10, Higashigotanda, Shinagawa-Ku, Tokyo				

Mid rise apartment in TOKYO near Gotanda Sta.



Lease Conditions			
LAYOUT	3 BR		
SIZE	77.71 m <sup>2</sup> /836.46 ft <sup>2</sup>		
RENT	JPY 335,000 / month		
Management Fee	JPY15,000/month		
Deposit	2 months	Key Money	1 month
Lease Term	Standard lease for 24 months		
Available	End, Mar, 2024		
Renewal Fee	1 month		
Agent Fee	1 month + tax		
Other Info	Key Replacement Fee : JPY30,000 Tax not included / Guarantor Company : TBC / Auto lock / Air-Con / Separated Toilet / Balcony / Flooring / Floor Heating / Bathroom dryer		

Building Information			
Completion	May, 1999	Earthquake Resistance	New
Structure	RC, 8 story		
Car Parking	N/A		
Bicycle Parking	-		
Music Instrument	-	Pet	-
Facilities	Delivery box / Elevator / Security / Close to Station		

\*The actual Layout & Size may differ slightly from this floor plans & pictures.



HOUSEREP TOKYO INC.

ハウスレップトーキョー株式会社

#301, 1-4-15, Hiroo, Shibuya-ku, Tokyo 150-0012, Japan

+81 (0)3 6427 5860

inquiry@housserep-tokyo.com

Transaction Type : Intermediate

Agent Fee : 1 month + tax

Website : www.housserep-tokyo.com



Remarks
Renters Insurance : Required