

FOR RENT

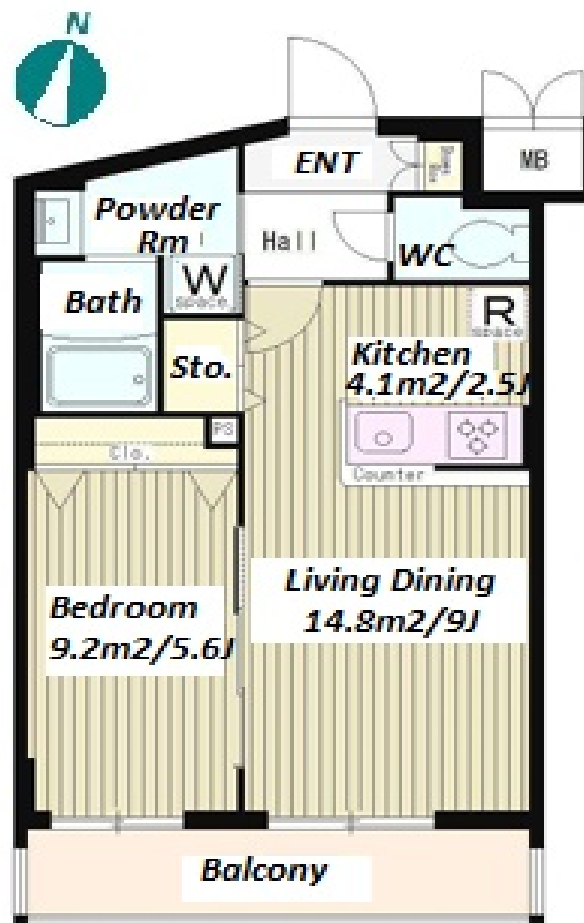
Property ID No. :152887

HOUSEREP TOKYO INC.

Website : www.houserep-tokyo.com

Property Name	IRENE HATSUDAI	Unit No.	TYPE	Access	Hatsudai Station on Keio Line (3 min)
		405	Apt.		
Address	1-10-1, Hommachi, Shibuya-Ku, Tokyo				

Stylish Mid Rise Apt. near Hatsudai stn.



*The actual Layout & Size may differ slightly from this floor plans & pictures.

Lease Conditions			
LAYOUT	1 BR		
SIZE	41.08 m ² /442.18 ft ²		
RENT	JPY 189,000 / month		
Management Fee	JPY10,000/month		
Deposit	2 months	Key Money	1 month
Lease Term	Standard lease for 24 months		
Available	End, Apr, 2024		
Renewal Fee	1 month		
Agent Fee	1 month + tax		
Other Info	Key Replacement Fee : JPY20,000 Tax not included / Guarantor Company : TBC / Auto lock / Air-Con / Separated Toilet / Balcony / Internet Included / Penalty Fee for Early Cancellation / Flooring / Bathroom dryer		

Building Information			
Completion	May, 2019	Earthquake Resistance	New
Structure	RC, 13 story		
Car Parking	N/A		
Bicycle Parking	extra charge		
Music Instrument	-	Pet	N/A
Facilities	Motorcycle Parking (TBC) / Delivery box / Elevator / Close to Station / 24h Garbage Drop-off / Newly-built (~7 y/o)		

Remarks
Renters Insurance : Required



HOUSEREP TOKYO INC.

ハウズレップトーキョー株式会社

#301, 1-4-15, Hiroo, Shibuya-ku, Tokyo 150-0012, Japan

+81 (0)3 6427 5860 inquiry@houserep-tokyo.com

Transaction Type : Intermediate

Agent Fee : 1 month + tax

Website : www.houserep-tokyo.com

