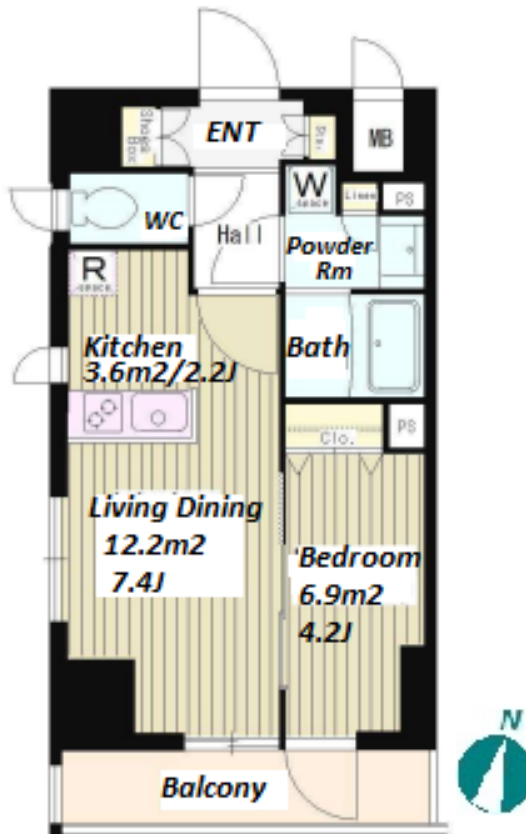



FOR RENT		Property ID No. :152885			HOUSEREP TOKYO INC.		Website : www.houserep-tokyo.com	
Property Name	IRENE HATSUDAI			Unit No.	TYPE	Access	Hatsudai Station on Keio Line (3 min)	
				1003	Apt.			
Address	1-10-1, Hommachi, Shibuya-Ku, Tokyo							

Stylish Mid Rise Apt. near Hatsudai stn.



\*The actual Layout & Size may differ slightly from this floor plans & pictures.



HOUSEREP TOKYO INC.


ハウスレップトーキョー株式会社

#301, 1-4-15, Hiroo, Shibuya-ku, Tokyo 150-0012, Japan  
 +81 (0)3 6427 5860 inquiry@houserep-tokyo.com

Transaction Type : Intermediate

Agent Fee : 1 month + tax

Website : www.houserep-tokyo.com



Lease Conditions			
LAYOUT	1 BR		
SIZE	34.55 m²/371.89 ft²		
RENT	JPY 183,000 / month		
Management Fee	JPY10,000/month		
Deposit	2 months	Key Money	1 month
Lease Term	Standard lease for 24 months		
Available	End, May, 2024		
Renewal Fee	1 month		
Agent Fee	1 month + tax		
Other Info	Key Replacement Fee : JPY20,000 Tax not included / Guarantor Company : TBC / Auto lock / Air-Con / Separated Toilet / Balcony / Internet Included / Penalty Fee for Early Cancellation / Flooring / Bathroom dryer		
Building Information			
Completion	May, 2019	Earthquake Resistance	New
Structure	RC, 13 story		
Car Parking	N/A		
Bicycle Parking	extra charge		
Music Instrument	-	Pet	N/A
Facilities	Motorcycle Parking (TBC) / Delivery box / Elevator / Close to Station / 24h Garbage Drop-off / Newly-built (~7 y/o)		
Remarks			
Renters Insurance : Required			