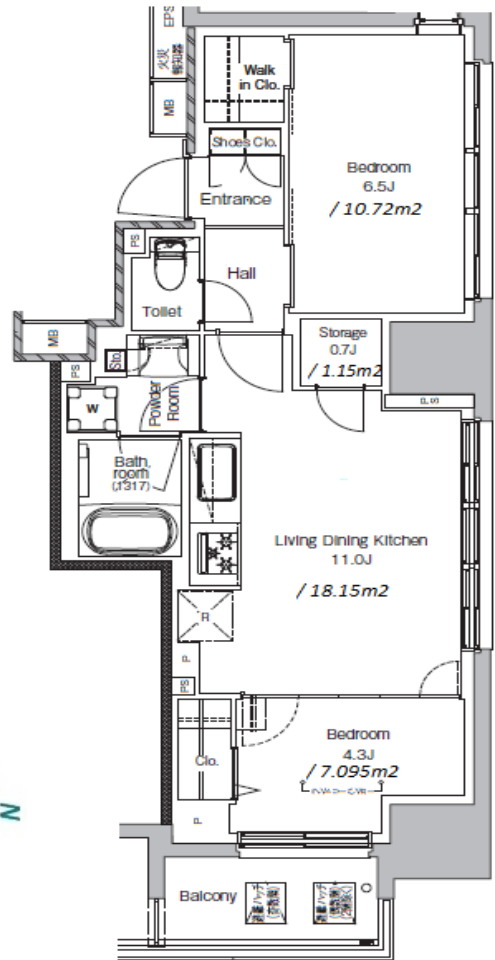


Property Name	MARKS YOKOHAMA TOBE	Unit No.	TYPE	Access	Tobe Station on Keikyu Line (2 min)
		404	Apt.		Yokohama Station on JR Negishi Line (15 min)
Address	29-10, Tobehoncho, Nishi-Ku, Yokohama-Shi, Kanagawa				Yokohama Station on JR Shonan Shinjuku Line (15 min)
					Yokohama Station on Toyoko Line (15 min)

Stylish Mid Rise Apt. near "Tobe" stn and "Yokohama" stn.



*The actual Layout & Size may differ slightly from this floor plans & pictures.

Lease Conditions		
LAYOUT	2 BR	
SIZE	53.23 m²/572.96 ft²	
RENT	JPY 208,000 / month	
Management Fee	JPY15,000/month	
Deposit	1 month	Key Money -
Lease Term	Standard lease for 24 months	
Available	Mid, Mar, 2024	
Renewal Fee	1 month	
Agent Fee	1 month + tax	
Other Info	Guarantor Company : TBC / No Key Money / Auto lock / Air-Con / Separated Toilet / Balcony / Internet (Extra Charge) / CS/CATV / Flooring / Bathroom dryer / WIC / Corner Unit	

Building Information			
Completion	Mar, 2024	Earthquake Resistance	New
Structure	RC, 10 story		
Car Parking	TBC		
Bicycle Parking	TBC		
Music Instrument	-	Pet	Negotiable
Facilities	Near Large Parks / Delivery box / Elevator / Close to Station / 24h Garbage Drop-off / Newly-built (~1 y/o)		

Remarks
Renters Insurance : Required



HOUSEREP TOKYO INC.

ハウズレップトーキョー株式会社

#301, 1-4-15, Hiroo, Shibuya-ku, Tokyo 150-0012, Japan

+81 (0)3 6427 5860 inquiry@houserrep-tokyo.com

Transaction Type : Intermediate

Agent Fee : 1 month + tax

Website : www.houserrep-tokyo.com

