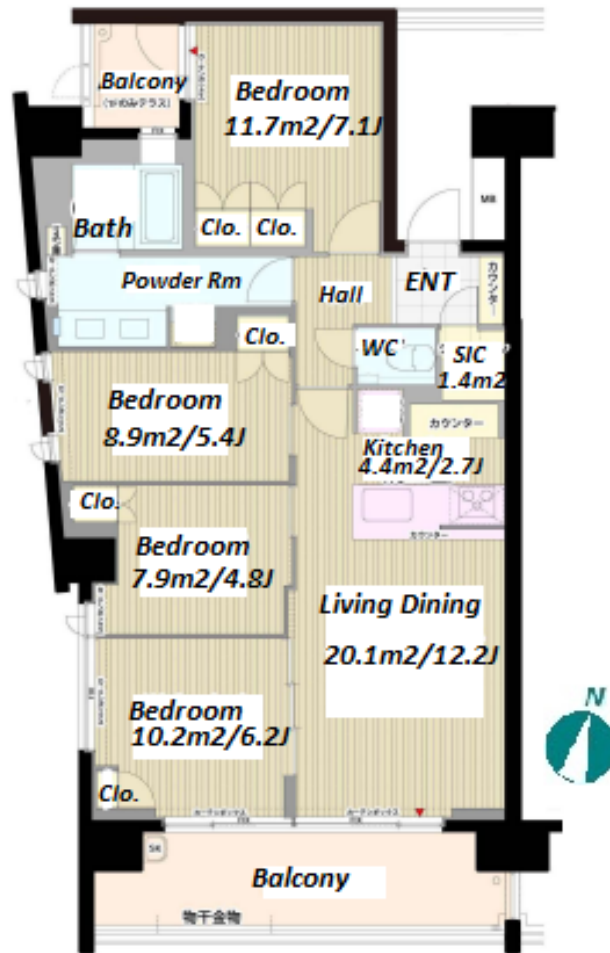
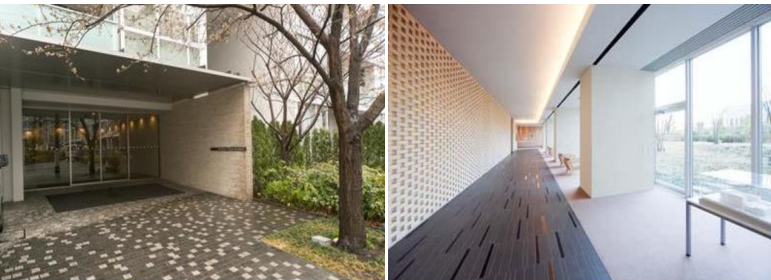


Property Name	GARDENIER KINUTA RESIDENCE	Unit No.	TYPE	Access	Soshigaya-okura Station on Odakyu Line (10 min) Chitosefunabashi Station on Odakyu Line (10 min)
		401	Apt.		
Address	2-14-12, Kinuta, Setagaya-Ku, Tokyo				

Low Rise Apt. at Complex Bldgs. w/ Facilities, near "Seijo"



*The actual Layout & Size may differ slightly from this floor plans & pictures.

Lease Conditions			
LAYOUT	4 BR		
SIZE	87.32 m²/939.9 ft²		
RENT	JPY 320,000 / month		
Management Fee	JPY20,000/month		
Deposit	2 months	Key Money	2 months
Lease Term	Standard lease for 24 months		
Available	Early, Jun, 2024		
Renewal Fee	1 month		
Agent Fee	1 month + tax		
Other Info	Key Replacement Fee : JPY20,000 Tax not included / Guarantor Company : TBC / Auto lock / Air-Con / Separated Toilet / Balcony / Musical Instrument Negotiable / Flooring / Floor Heating / Dishwasher / Bathroom dryer		

Building Information			
Completion	Feb, 2008	Earthquake Resistance	New
Structure	RC, 10 story		
Car Parking	TBC		
Bicycle Parking	for 1 space (Included)		
Music Instrument	Negotiable	Pet	Allowed
Facilities	Motorcycle Parking (JPY8,000 + tax / month) / Gym ((Included)) / Near Large Parks / Front desk / Janitor / Delivery box / Elevator		

Remarks
Renters Insurance : Required / Pet:additional deposit (1 month) / Pet : up to two small dogs/ No cat



HOUSEREP TOKYO INC.

ハウスレップトーキョー株式会社

#301, 1-4-15, Hiroo, Shibuya-ku, Tokyo 150-0012, Japan

+81 (0)3 6427 5860 inquiry@housserep-tokyo.com

Transaction Type : Intermediate

Agent Fee : 1 month + tax

Website : www.housserep-tokyo.com

