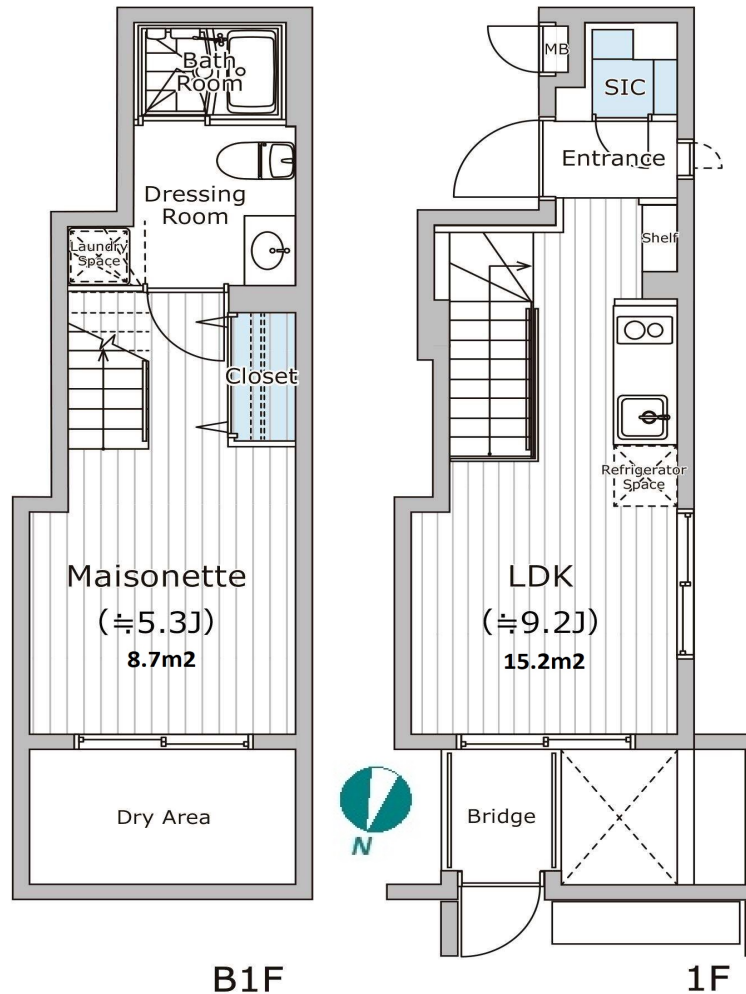


Property Name	FARE NISHISHINJUKU 7	Unit No.	102	TYPE	Apt.	Access	Nishishinnjukugochoume Station on Oedo Line (4 min) Hatsudai Station on Keio Line (13 min)
Address	4-20-14, Nishishinjuku, Shinjuku-Ku, Tokyo						

Low rise apartment in TOKYO close to Nishishinjuku Gochome Sta.



\*The actual Layout & Size may differ slightly from this floor plans & pictures.

Lease Conditions			
LAYOUT	1 BR		
SIZE	37.55 m <sup>2</sup> /404.18 ft <sup>2</sup>		
RENT	JPY 147,000 / month		
Management Fee	JPY10,000/month		
Deposit	1 month	Key Money	-
Lease Term	Standard lease for 24 months		
Available	Now		
Renewal Fee	1 month		
Agent Fee	1 month + tax		
Other Info	Guarantor Company : TBC / No Key Money / Auto lock / Air-Con / Separated Toilet / Internet Included / CS/CATV / Flooring / Bathroom dryer		

Building Information			
Completion	Dec, 2023	Earthquake Resistance	New
Structure	RC, 4 story		
Car Parking	N/A		
Bicycle Parking	N/A		
Music Instrument	-	Pet	-
Facilities	Within 20 min to Roppongi by train / Janitor / Delivery box / Security / Close to Station / Low-rise / Newly-built (~1 y/o)		

Remarks
Renters Insurance : Required



HOUSEREP TOKYO INC.

ハウスレプトーキョー株式会社

#301, 1-4-15, Hiroo, Shibuya-ku, Tokyo 150-0012, Japan

+81 (0)3 6427 5860 inquiry@houserep-tokyo.com

Transaction Type : Intermediate

Agent Fee : 1 month + tax

Website : www.houserep-tokyo.com

