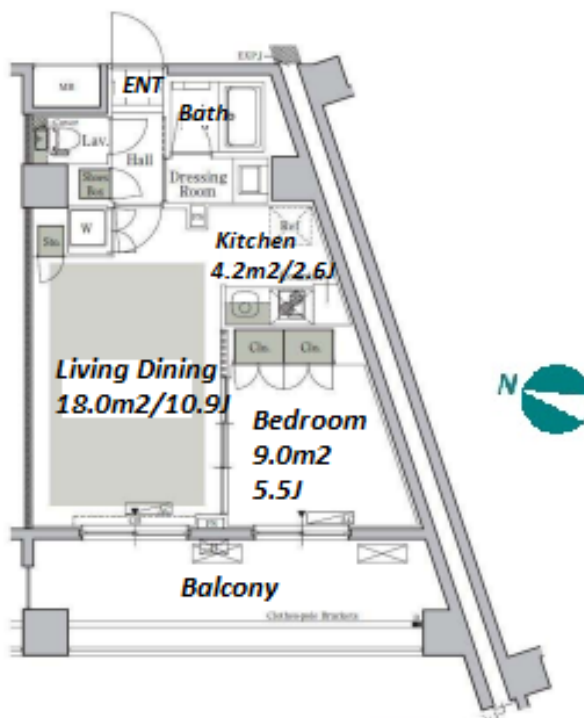
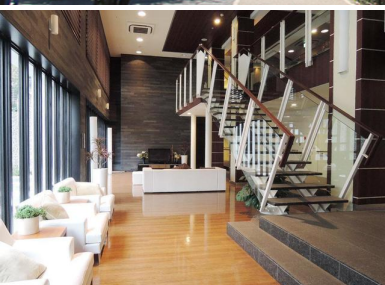


Property Name	PARK CUBE NISHIGAHARA STAGE	Unit No.	TYPE	Access	Nishisugamo Station on Mita Line (9 min) Nishigahara Station on Namboku Line (11 min) Sugamo Station on JR Yamanote Line (16 min)
		501	Apt.		
Address	4-51-35, Nishigahara, Kita-Ku, Tokyo				

Residential Mid-rise Apt. in Nishigahara



Lease Conditions		
LAYOUT	1 BR	
SIZE	43.8 m²/471.45 ft²	
RENT	JPY 158,000 / month	
Management Fee	JPY10,000/month	
Deposit	1 month	Key Money -
Lease Term	Fixed term lease for 24 months	
Available	Now	
Renewal Fee	-	
Agent Fee	1 month + tax	
Other Info	Key Replacement Fee : JPY15,000 Tax not included / Guarantor Company : TBC / No Key Money / Auto lock / Air-Con / Separated Toilet / Balcony / Internet Included / Penalty Fee for Early Cancellation / Musical Instrument Negotiable / CS/CATV / Flooring / Floor Heating / Bathroom dryer	

Building Information			
Completion	Dec, 2009	Earthquake Resistance	New
Structure	RC, 14 story		
Car Parking	extra charge		
Bicycle Parking	for 2 spaces (Included)		
Music Instrument	Negotiable	Pet	Allowed
Facilities	Motorcycle Parking (TBC) / Near Large Parks / Concierge / Delivery box / Elevator		

*The actual Layout & Size may differ slightly from this floor plans & pictures.



HOUSEREP TOKYO INC.

ハウスレップトーキョー株式会社

#301, 1-4-15, Hiroo, Shibuya-ku, Tokyo 150-0012, Japan

+81 (0)3 6427 5860

inquiry@housserep-tokyo.com

Transaction Type : Intermediate

Agent Fee : 1 month + tax

Website : www.housserep-tokyo.com



Remarks
Renters Insurance : Required / Town association fee: JPY.3,000/2yrs / Bicycle parking : Registration Fee: JPY.2,000+tax / Pet:additional deposit (1 month) / Pet : a small dog or two cats