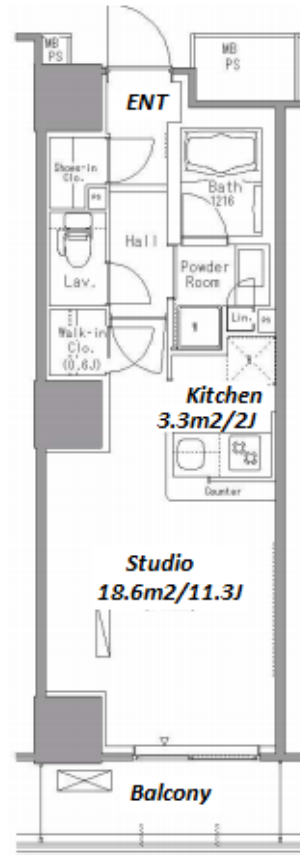


| | | | | | |
|---------------|--------------------------------|----------|------|--------|---|
| Property Name | PARK AXIS TOYOSU | Unit No. | TYPE | Access | Toyosu Station on Yurakucho Line (8 min) Tsukishima Station on Yurakucho Line (14 min) |
| | | 321 | Apt. | | |
| Address | 1-2-39, Toyosu, Koto-Ku, Tokyo | | | | |

Mid-rise Apt. in Toyosu, Tokyo Bay area



| Lease Conditions | | | |
|------------------|--|-----------|---------|
| LAYOUT | Studio | | |
| SIZE | 35.61 m²/383.3 ft² | | |
| RENT | JPY 171,000 / month | | |
| Management Fee | JPY5,000/month | | |
| Deposit | 2 months | Key Money | 1 month |
| Lease Term | Standard lease for 24 months | | |
| Available | End, Mar, 2024 | | |
| Renewal Fee | 1 month | | |
| Agent Fee | 1 month + tax | | |
| Other Info | Key Replacement Fee : JPY15,000 Tax not included / Guarantor Company : TBC / Auto lock / Air-Con / Separated Toilet / Balcony / Penalty Fee for Early Cancellation / Musical Instrument Negotiable / CS/CATV / Flooring / IH Stoves / Bathroom dryer / WIC | | |

| Building Information | | | |
|----------------------|---|-----------------------|---------|
| Completion | Mar, 2008 | Earthquake Resistance | New |
| Structure | RC, 20 story | | |
| Car Parking | TBC | | |
| Bicycle Parking | JPY200 ~ 300 + tax / month | | |
| Music Instrument | Negotiable | Pet | Allowed |
| Facilities | Motorcycle Parking (TBC) / Gym ((Included)) / Concierge / Delivery box / Elevator | | |

*The actual Layout & Size may differ slightly from this floor plans & pictures.



HOUSEREP TOKYO INC.

ハウスレップトーキョー株式会社

#301, 1-4-15, Hiroo, Shibuya-ku, Tokyo 150-0012, Japan

+81 (0)3 6427 5860 inquiry@housserep-tokyo.com

Transaction Type : Intermediate

Agent Fee : 1 month + tax

Website : www.housserep-tokyo.com



| Remarks |
|--|
| Renters Insurance : Required / Pet:additional deposit (1 month) / Pet : Management fee?JPY.1,000/month for a pet |