

FOR RENT

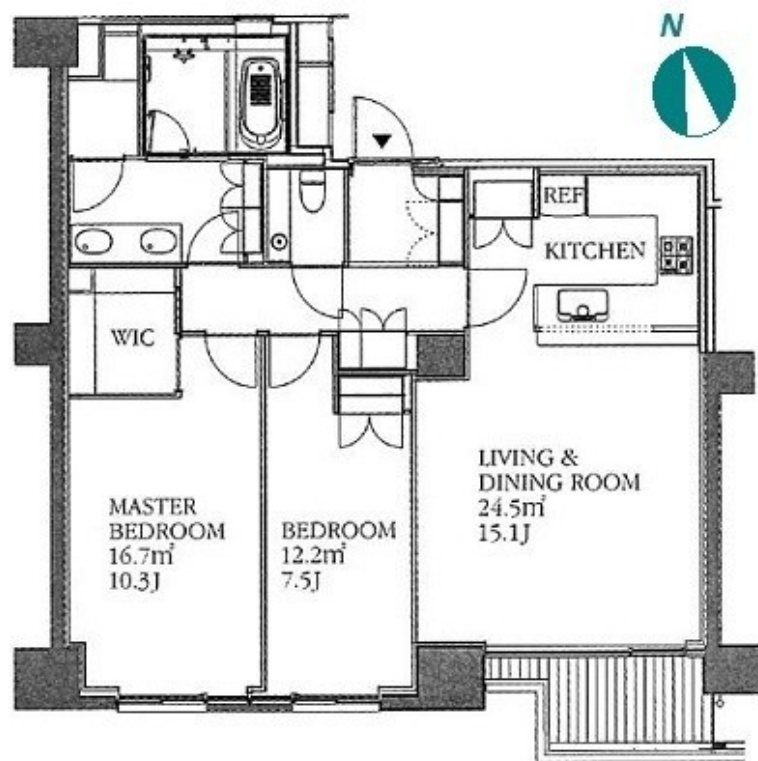
Property ID No. :152743

HOUSEREP TOKYO INC.

Website : www.housserep-tokyo.com

| | | | | | |
|---------------|-----------------------------------|----------|------|--------|---|
| Property Name | FORESTSEINE REINANZAKA RESIDENCE | Unit No. | TYPE | Access | Tameikesannnou Station on Namboku Line (5 min) Ropponngicchoume Station on Namboku Line (8 min) Kamiyachou Station on Hibiya Line (9 min) |
| | | 403 | Apt. | | |
| Address | 1-11-3, Akasaka, Minato-Ku, Tokyo | | | | |

Luxury Mid-rise Apt. in Roppongi / Akasaka, near "Ark Hills



| Lease Conditions | | |
|------------------|---|-------------|
| LAYOUT | 2 BR | |
| SIZE | 92.08 m²/991.14 ft² | |
| RENT | JPY 650,000 / month | |
| Management Fee | - | |
| Deposit | 4 months | Key Money - |
| Lease Term | Fixed term lease for 24 months | |
| Available | End, Apr, 2024 | |
| Renewal Fee | - | |
| Agent Fee | 1 month + tax | |
| Other Info | Guarantor Company : TBC / No Key Money / Auto lock / Fridge / Air-Con / Separated Toilet / Balcony / Musical Instrument Negotiable / CS/CATV / Flooring / Carpet / Floor Heating / Washer / Dryer / Oven / Bathroom dryer / WIC | |

| Building Information | | | |
|----------------------|---|-----------------------|------------|
| Completion | Jan, 2008 | Earthquake Resistance | New |
| Structure | RC, 8 story | | |
| Car Parking | N/A | | |
| Bicycle Parking | TBC | | |
| Music Instrument | Negotiable | Pet | Negotiable |
| Facilities | Motorcycle Parking (TBC) / Trunk Room (JPY10,000/ month) / Within 20 min to Roppongi by train / Within 20 min to Tokyo station by car / Near Large Parks / Janitor / Delivery box / Elevator / Security / Close to Station / 24h Garbage Drop-off | | |

*The actual Layout & Size may differ slightly from this floor plans & pictures.



HOUSEREP TOKYO INC.

ハウスレップトーキョー株式会社

#301, 1-4-15, Hiroo, Shibuya-ku, Tokyo 150-0012, Japan

+81 (0)3 6427 5860 inquiry@housserep-tokyo.com

Transaction Type : Intermediate

Agent Fee : 1 month + tax

Website : www.housserep-tokyo.com



| Remarks |
|---|
| Renters Insurance : Required / Wooden Floor |