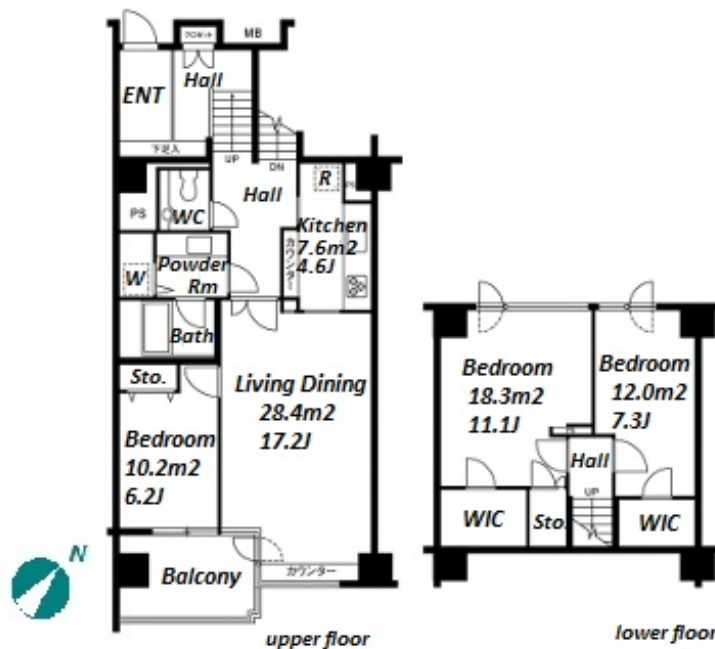
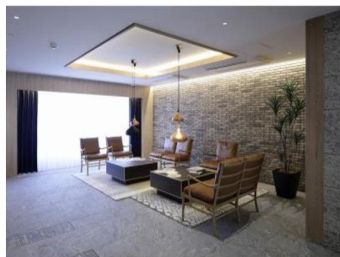
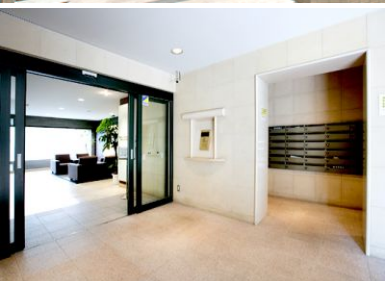


Property Name	SANGUBASHI MANSION	Unit No.	TYPE	Access	Sannguubashi Station on Odakyu Line (5 min) Hatsudai Station on Keio Line (5 min)
		109	Apt.		
Address	4-41-7, Yoyogi, Shibuya-Ku, Tokyo				

South facing low rise apartment in quiet residential area



Lease Conditions			
LAYOUT	3 BR		
SIZE	119.27 m²/1283.81 ft²		
RENT	JPY 575,000 / month		
Management Fee	JPY25,000/month		
Deposit	2 months	Key Money	-
Lease Term	Standard lease for 24 months		
Available	Now		
Renewal Fee	1 month		
Agent Fee	1 month + tax		
Other Info	No Key Money / Free rent / Auto lock / Air-Con / Separated Toilet / Balcony / Loft/Maisonnette / Penalty Fee for Early Cancellation / Flooring / Bathroom dryer / WIC		

Building Information			
Completion	Jul, 1993	Earthquake Resistance	New
Structure	RC, 7 story		
Car Parking	JPY50,000 + tax / month		
Bicycle Parking	extra charge		
Music Instrument	-	Pet	-
Facilities	Near Large Parks / Janitor / Elevator / Close to Station		

Remarks
Renters Insurance : Required / Key replacement: extra charge

*The actual Layout & Size may differ slightly from this floor plans & pictures.



HOUSEREP TOKYO INC.

ハウスレップトーキョー株式会社

#301, 1-4-15, Hiroo, Shibuya-ku, Tokyo 150-0012, Japan

+81 (0)3 6427 5860

inquiry@houserep-tokyo.com

Transaction Type : Intermediate

Agent Fee : 1 month + tax

Website : www.houserep-tokyo.com

