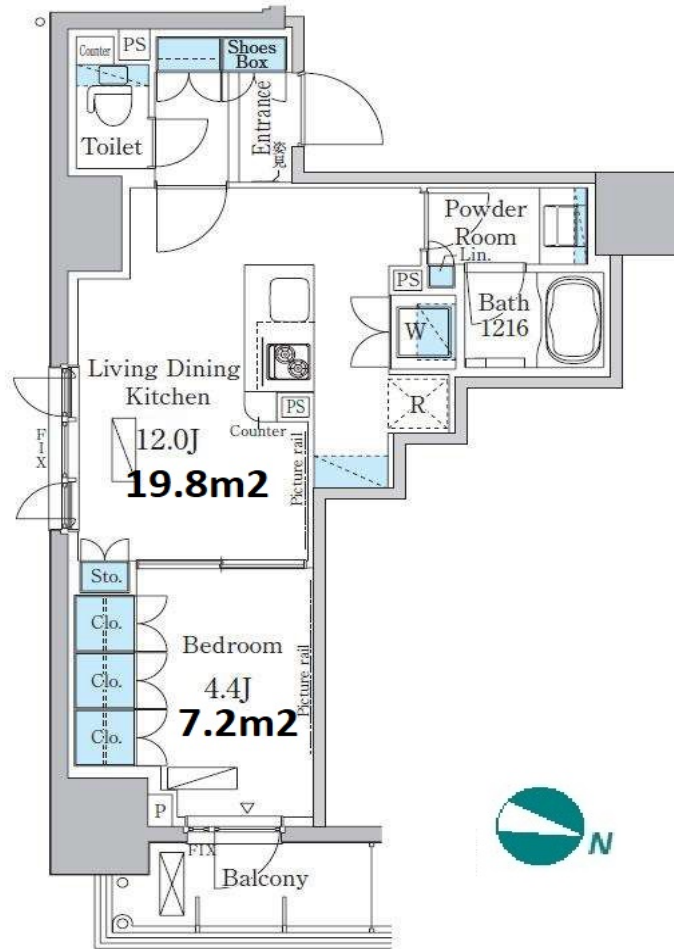


Property Name	PARK AXIS KODENMACHO	Unit No.	TYPE	Access	Kodenmachou Station on Hibiya Line (3 min) Bakurochou Station on JR Sobu Line (5 min) Kannda Station on JR Yamanote Line (10 min)
		1401	Apt.		
Address	1-7-8, Iwamotocho, Chiyoda-Ku, Tokyo				

Modern Mid-rise Apt. in Kodenmacho, near Nihombashi area



*The actual Layout & Size may differ slightly from this floor plans & pictures.

Lease Conditions		
LAYOUT	1 BR	
SIZE	40.74 m²/438.52 ft²	
RENT	JPY 192,000 / month	
Management Fee	JPY13,000/month	
Deposit	1 month	Key Money -
Lease Term	Standard lease for 24 months	
Available	Early, Mar, 2024	
Renewal Fee	1 month	
Agent Fee	1 month + tax	
Other Info	Key Replacement Fee : JPY15,000 Tax not included / Guarantor Company : TBC / No Key Money / Auto lock / Air-Con / Separated Toilet / Balcony / Internet (Extra Charge) / Penalty Fee for Early Cancellation / Musical Instrument Negotiable / CS/CATV / Flooring / Bathroom dryer	

Building Information			
Completion	Jun, 2016	Earthquake Resistance	New
Structure	RC, 14 story		
Car Parking	N/A		
Bicycle Parking	for 1 space (Included)		
Music Instrument	Negotiable	Pet	Negotiable
Facilities	Delivery box / Elevator / Newly-built (~7 y/o)		

Remarks
Renters Insurance : Required / Bicycle parking : One-time sticker registration fee: 1,000yen+tax / Pet: additional one month for deposit



HOUSEREP TOKYO INC.

ハウスレップトーキョー株式会社

#301, 1-4-15, Hiroo, Shibuya-ku, Tokyo 150-0012, Japan

+81 (0)3 6427 5860 inquiry@housserep-tokyo.com

Transaction Type : Intermediate

Agent Fee : 1 month + tax

Website : www.housserep-tokyo.com

