

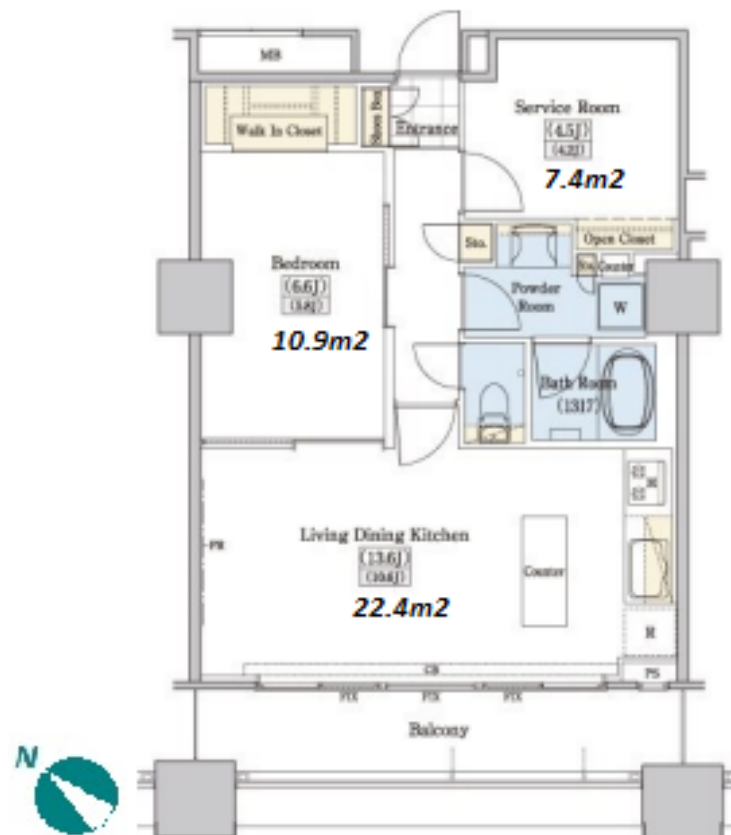
FOR RENT

Property ID No. :152572

HOUSEREP TOKYO INC.

Website : www.houserep-tokyo.com

Property Name	RESIDIA TOWER KAMI-IKEBUKURO(TOWER)	Unit No.	TYPE	Access	Ootsuka Station on JR Yamanote Line (9 min) Nishisugamo Station on Mita Line (12 min)
		TW-403	Apt.		
Address	1-37-22, Kamiikebukuro, Toshima-Ku, Tokyo				



Lease Conditions			
LAYOUT	1 BR+S		
SIZE	56.61 m²/609.34 ft²		
RENT	JPY 250,000 / month		
Management Fee	JPY15,000/month		
Deposit	1 month	Key Money	-
Lease Term	Fixed term lease for 36 months		
Available	End, Apr, 2024		
Renewal Fee	-		
Agent Fee	1 month + tax		
Other Info	Key Replacement Fee : JPY20,000 Tax not included / Guarantor Company : TBC / No Key Money / Auto lock / Air-Con / Separated Toilet / Balcony / Internet (Extra Charge) / Penalty Fee for Early Cancellation / Musical Instrument Negotiable / CS/CATV / Flooring / Bathroom dryer / WIC		

Building Information			
Completion	May, 2009	Earthquake Resistance	New
Structure	RC, 22 story		
Car Parking	JPY25,000 ~ 39,000 + tax / month		
Bicycle Parking	N/A		
Musical Instrument	Negotiable	Pet	Allowed
Facilities	Front desk / Delivery box / Elevator / Security / 24h Garbage Drop-off / High-rise		

Remarks
Fixed term lease : Re-contract fee: 1 month of new rent / Renters Insurance : Required / Internet fee: JPY.1,500+tax/month / Parking : 1 month for deposit / Pet:additional deposit ( 1 month ) / Pet : a small dog or a cat

\*The actual Layout &amp; Size may differ slightly from this floor plans &amp; pictures.



HOUSEREP TOKYO INC.

ハウスレップトーキョー株式会社

#301, 1-4-15, Hiroo, Shibuya-ku, Tokyo 150-0012, Japan

+81 (0)3 6427 5860

inquiry@houserep-tokyo.com

Transaction Type : Intermediate

Agent Fee : 1 month + tax

Website : www.houserep-tokyo.com

