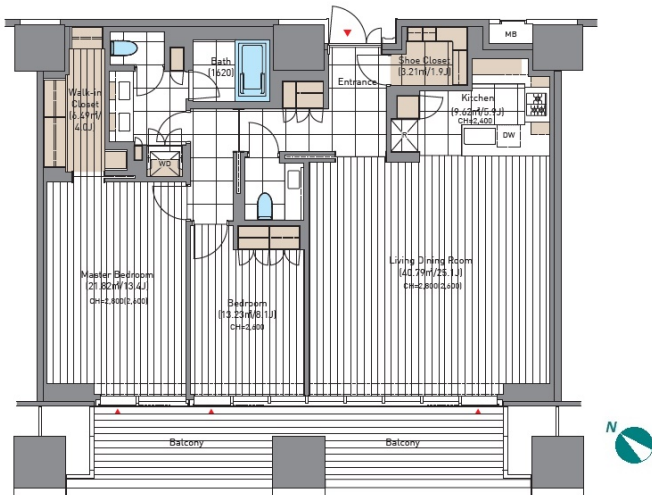
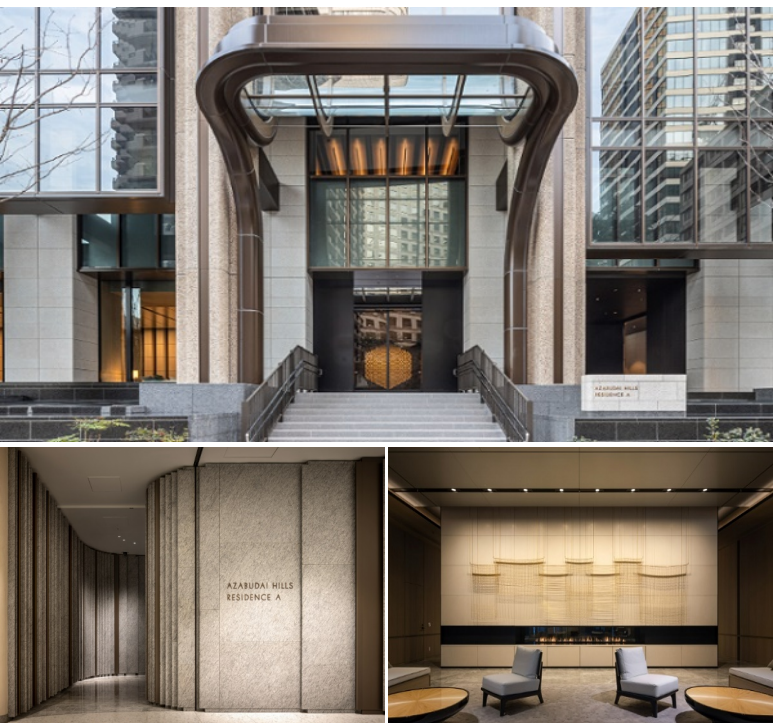


|               |                                   |                         |          |      |                     |   |                                   |  |
|---------------|-----------------------------------|-------------------------|----------|------|---------------------|---|-----------------------------------|--|
| FOR RENT      |                                   | Property ID No. :152554 |          |      | HOUSEREP TOKYO INC. |   | Website : www.housserep-tokyo.com |  |
| Property Name | AZABUDAI HILLS RESIDENCE A        |                         | Unit No. | TYPE | Access              | Ropponngicchoume Station on Namboku Line (5 min)<br>Kamiyachou Station on Hibiya Line (6 min) |                                   |  |
|               |                                   |                         | 2708     | Apt. |                     |   |                                   |  |
| Address       | 1-2-1, Azabudai, Minato-Ku, Tokyo |                         |          |      |                     |   |                                   |  |

New Land-Mark of Roppongi area, Azabudai Hills = Modern Urban Village, near Tokyo Tower



| Lease Conditions |  |           |   |
|------------------|--|-----------|---|
| LAYOUT           | 2 BR   |           |   |
| SIZE             | 129.32 m <sup>2</sup> /1391.98 ft <sup>2</sup>   |           |   |
| RENT             | JPY 1,750,000 / month  |           |   |
| Management Fee   | -  |           |   |
| Deposit          | 4 months   | Key Money | - |
| Lease Term       | Fixed term lease for 36 months   |           |   |
| Available        | Negotiable   |           |   |
| Renewal Fee      | -  |           |   |
| Agent Fee        | 1 month + tax  |           |   |
| Other Info       | Guarantor Company : TBC / Auto lock / Fridge / Air-Con / Separated Toilet / Balcony / No Smoking / Nice Views / Flooring / Floor Heating / Washer / Dryer / Dishwasher / Oven / Bathroom dryer / WIC / Large Dog Friendly / High Ceiling (above 2.5m) / Semi-furnished (Home Appliances) / 2 Toilets |           |   |

| Building Information |  |                       |            |
|----------------------|--|-----------------------|------------|
| Completion           | Sep, 2023  | Earthquake Resistance | New        |
| Structure            | RC, 53 story   |                       |            |
| Car Parking          | JPY60,000 ~ 150,000/ month   |                       |            |
| Bicycle Parking      | JPY500 ~ 15,000/ month   |                       |            |
| Music Instrument     | -  | Pet                   | Negotiable |
| Facilities           | Motorcycle Parking (JPY15,000 ~ 20,000/ month) / Trunk Room (JPY10,000 ~ 40,000/ month) / Gym (extra charge) / Within 20 min walk to Roppongi / Near Large Parks / Designer's / Concierge / Delivery box / Elevator / Sky lounge / Security / Close to Station / 24h Garbage Drop-off / Fitness / Gym / High-rise / Newly-built (~1 y/o) |                       |            |

\*The actual Layout & Size may differ slightly from this floor plans & pictures.



HOUSEREP TOKYO INC.

ハウスレップトーキョー株式会社

#301, 1-4-15, Hiroo, Shibuya-ku, Tokyo 150-0012, Japan

+81 (0)3 6427 5860 inquiry@housserep-tokyo.com

Transaction Type : Intermediate

Agent Fee : 1 month + tax

Website : www.housserep-tokyo.com



| Remarks                       |
|-------------------------------|
| Renters Insuarance : Required |