

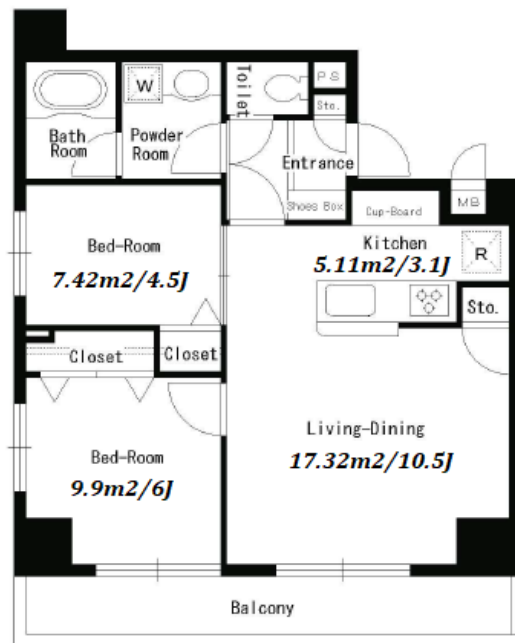
FOR RENT

Property ID No. :152539

HOUSEREP TOKYO INC.

Website : www.housserrep-tokyo.com

Property Name	PARK CUBE HONJO AZUMABASHI	Unit No.	TYPE	Access	Honnjoadumabashi Station on Toei Asakusa Line (6 min) Asakusa Station on Ginza Line (14 min) Kinnshichou Station on JR Chuo-Sobu Line (16 min)
		505	Apt.		
Address	4-19-4, Honjo, Sumida-Ku, Tokyo				



Lease Conditions			
LAYOUT	2 BR		
SIZE	55.82 m²/600.84 ft²		
RENT	JPY 195,000 / month		
Management Fee	JPY15,000/month		
Deposit	2 months	Key Money	1 month
Lease Term	Standard lease for 24 months		
Available	Mid, Apr, 2024		
Renewal Fee	1 month		
Agent Fee	1 month + tax		
Other Info	Key Replacement Fee : JPY15,000 Tax not included / Guarantor Company : TBC / Auto lock / Air-Con / Separated Toilet / Balcony / Penalty Fee for Early Cancellation / Musical Instrument Negotiable / Flooring / Bathroom dryer		

Building Information			
Completion	Mar, 2006	Earthquake Resistance	New
Structure	RC, 10 story		
Car Parking	N/A		
Bicycle Parking	for 1 space ( Included )		
Music Instrument	Negotiable	Pet	Allowed
Facilities	Motorcycle Parking (JPY3,000 + tax / month) / Delivery box / Elevator		

\*The actual Layout &amp; Size may differ slightly from this floor plans &amp; pictures.



HOUSE REP TOKYO INC.

ハウスレップトーキョー株式会社

#301, 1-4-15, Hiroo, Shibuya-ku, Tokyo 150-0012, Japan

+81 (0)3 6427 5860

inquiry@housserrep-tokyo.com

Transaction Type : Intermediate

Agent Fee : 1 month + tax

Website : www.housserrep-tokyo.com



Remarks
Renters Insurance : Required / Bicycle parking : Registration fee: JPY.2,000+tax / Pet:additional deposit ( 1 month ) / Pet : a small dog or a cat