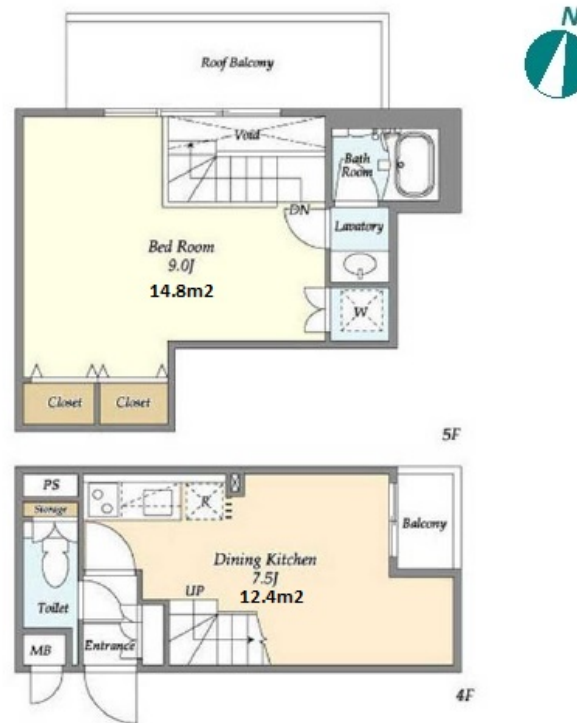


Property Name	LEGALAND SASAZUKA	Unit No.	TYPE	Access	Sasaduka Station on Keio Line (5 min) Hatagaya Station on Keio Line (18 min)
		403	Apt.		
Address	1-44-9, Sasazuka, Shibuya-Ku, Tokyo				

Low rise apartment in TOKYO close Sasazuka Sta.



Lease Conditions			
LAYOUT	1 BR		
SIZE	42.48 m <sup>2</sup> /457.25 ft <sup>2</sup>		
RENT	JPY 165,000 / month		
Management Fee	JPY10,000/month		
Deposit	1 month	Key Money	1 month
Lease Term	Standard lease for 24 months		
Available	Now		
Renewal Fee	1 month		
Agent Fee	1 month + tax		
Other Info	Key Replacement Fee : JPY30,000 Tax not included / Guarantor Company : TBC / Auto lock / Air-Con / Separated Toilet / Roof Balcony / Bathroom dryer		

Building Information			
Completion	Jan, 2019	Earthquake Resistance	New
Structure	RC, 5 story		
Car Parking	-		
Bicycle Parking	-		
Music Instrument	-	Pet	N/A
Facilities	Delivery box / Security / Close to Station / Low-rise / Newly-built (~7 y/o)		

Remarks
Renters Insurance : Required

\*The actual Layout & Size may differ slightly from this floor plans & pictures.



HOUSEREP TOKYO INC.

ハウズレップトーキョー株式会社

#301, 1-4-15, Hiroo, Shibuya-ku, Tokyo 150-0012, Japan

+81 (0)3 6427 5860

inquiry@housserep-tokyo.com

Transaction Type : Intermediate

Agent Fee : 1 month + tax

Website : www.housserep-tokyo.com

